

Student of Benozzo Gozzoli
Devotional Cross



KRESS CATALOGUE NUMBER

K372

IDENTIFIER

3466

ARTIST

Gozzoli, Benozzo, c. 1421-1497
Anonymous Artist

NATIONALITY

Italian

DATE

after 1461

MEDIUM

tempera and gilding on panel

TYPE OF OBJECT

Painting

DIMENSIONS

52.7 x 41.6 cm (20-3/4 x 16-3/8 in)

LOCATION

Museum of Art and Archaeology, University of Missouri, Columbia, Missouri

HISTORICAL ATTRIBUTION

Alunno di Benozzo, active late 15th century-early 16th century

PROVENANCE

Count Louis Paar, Rome; (his sale, Giacomini & Capobianchi, Palais de Venise, Rome, 20-28 March 1889, no. 355 as Gozzoli). (Count Alessandro Contini Bonacossi [1878-1955] Rome-Florence); sold to Samuel H. Kress [1863-1955] on 10 October 1935; gift to the National Gallery of Art in 1939; deaccessioned in 1952 and returned to the Samuel H. Kress Foundation; gift 1961 to Museum

KRESS COLLECTION DIGITAL ARCHIVE

of Art and Archaeology, University of Missouri in 1961, no. 61.73.

ACCESSION NUMBER

61.73

KRESS NUMBER

372

PICHETTO NUMBER

8801

LEGACY NGA NUMBER

318

1 ACQUISITION

Contini Bonacossi, Alessandro, October 10, 1935 [2]

3 DISTRIBUTIONS

Gift to National Gallery of Art, June 29, 1939

Deaccession by National Gallery of Art, October 15, 1952

Gift to Museum of Art and Archaeology, University of Missouri, December 09, 1961

EXTERNAL LINKS

Related Collection Record

<http://maacollections.missouri.edu/ArgusNET/Portal/Portal.aspx>

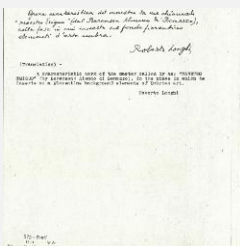
Related National Gallery of Art Library Image Collections Record

https://library.nga.gov/permalink/01NGA_INST/1p5jkvq/alma99411443804896

12 ARCHIVAL ITEMS

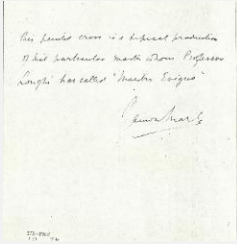


K0372 - Expert opinion by Berenson, circa 1920s-1950s

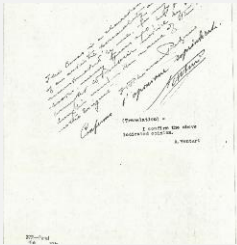


K0372 - Expert opinion by Longhi, circa 1920s-1950s

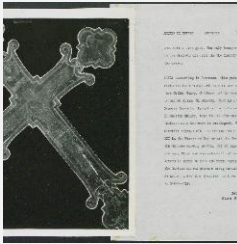
KRESS COLLECTION DIGITAL ARCHIVE



K0372 - Expert opinion by Marle, circa 1920s-1930s



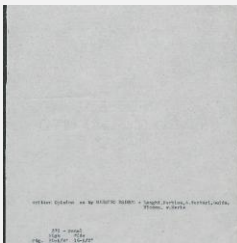
K0372 - Expert opinion by Perkins et al., circa 1920s-1940s



K0372 - Alan Burroughs report, circa 1930s-1940s

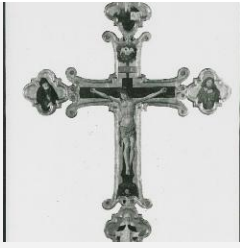


K0372 - Expert opinion by Fiocco, circa 1930s-1940s

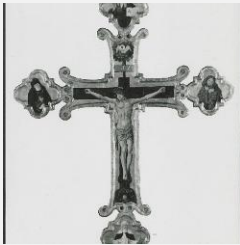


K0372 - Art object record, circa 1930s-1950s

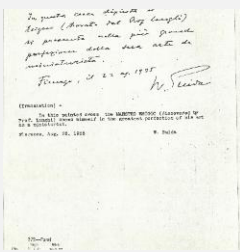
KRESS COLLECTION DIGITAL ARCHIVE



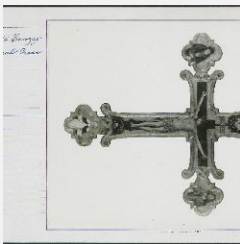
K0372 - Photograph, circa 1930s-1960s



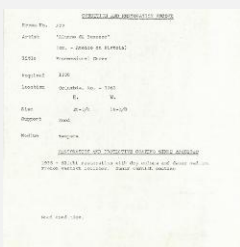
K0372 - Photograph, circa 1930s-1960s



K0372 - Expert opinion by Suida, 1935



K0372 - National Gallery of Art mounted photograph, circa 1940s-1950s



K0372 - Condition and restoration record, circa 1950s-1960s

RECORD LINK

<https://kress.nga.gov/Detail/objects/3466>