

**Giovanni di Nicola da Pisa, active 1326-1358**  
*Madonna of Humility, with Angels*



**KRESS CATALOGUE NUMBER**

K4

**IDENTIFIER**

3478

**ARTIST**

Giovanni di Nicola da Pisa, active 1326-1358

**NATIONALITY**

Italian

**DATE**

14th century

**MEDIUM**

tempera on panel

**TYPE OF OBJECT**

Painting

**DIMENSIONS**

76.8 x 47 cm (30-1/4 x 18-1/2 in)

**LOCATION**

Williams College Museum of Art, Williamstown, Massachusetts

**HISTORICAL ATTRIBUTION**

Barna da Siena, active c. 1330-1350

**PROVENANCE**

Niccolini, Florence. Francesco Rossi, Florence. [1] (Count Alessandro Contini Bonacossi [1878-1955] Rome- Florence); sold to Samuel H. Kress [1863-1955] on 17 March 1927 as attributed to Barnaba da Siena; gift 1939 to the National Gallery of Art; deaccessioned 1952 and returned to the Samuel H. Kress Foundation; gift to Williams College Museum of Art, in 1960 no. 60.13. [1]

# KRESS COLLECTION DIGITAL ARCHIVE

Rossi is listed in the provenance on Contini Bill of Sale, Kress Foundation Archives, New York.

**ACCESSION NUMBER**

60.13

**KRESS NUMBER**

4

**LEGACY NGA NUMBER**

116

---

**1 ACQUISITION**

Contini Bonacossi, Alessandro, March 17, 1927

---

**3 DISTRIBUTIONS**

Gift to National Gallery of Art, June 29, 1939

Deaccession by National Gallery of Art, October 15, 1952

Gift to Williams College Museum of Art, December 09, 1961

---

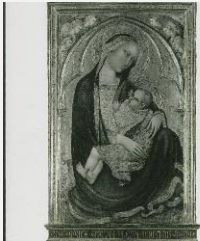
**EXTERNAL LINKS****Related Collection Record**

<http://egallery.williams.edu/objects/18>

**Related National Gallery of Art Library Image Collections Record**

[https://library.nga.gov/permalink/01NGA\\_INST/1p5jkvq/alma991100293804896](https://library.nga.gov/permalink/01NGA_INST/1p5jkvq/alma991100293804896)

---

**13 ARCHIVAL ITEMS**

K0004 - Expert opinion by Berenson, circa 1920s-1950s

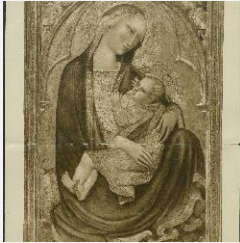


K0004 - Expert opinion by Longhi, circa 1920s-1950s

# KRESS COLLECTION DIGITAL ARCHIVE



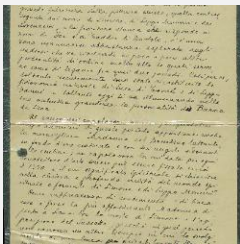
K0004 - Expert opinion by Marle, circa 1920s-1930s



K0004 - Expert opinion by Perkins, circa 1920s-1940s



K0004 - Expert opinion by A. Venturi, circa 1920s-1930s

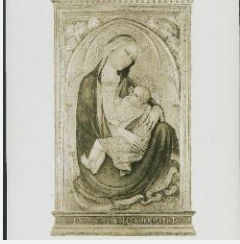


K0004 - Expert opinion by Longhi, 1926



K0004 - Alan Burroughs report, circa 1930s-1940s

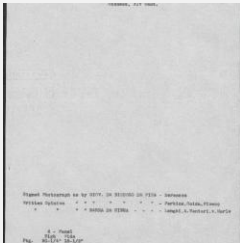
# KRESS COLLECTION DIGITAL ARCHIVE



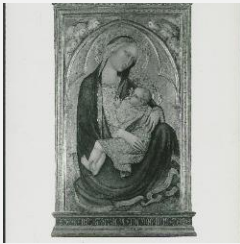
K0004 - Expert opinion by Fiocco et al., circa 1930s-1940s



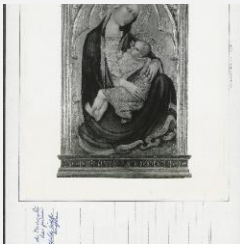
K0004 - Art object record, circa 1930s-1950s



K0004 - Art object record, circa 1930s-1950s

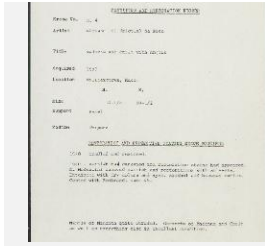


K0004 - Photograph, circa 1930s-1960s



K0004 - National Gallery of Art mounted photograph, circa 1940s-1950s

# KRESS COLLECTION DIGITAL ARCHIVE



K0004 - Condition and restoration record, circa 1950s-1960s

## RECORD LINK

<https://kress.nga.gov/Detail/objects/3478>