

Fra Diamante, c. 1430-c. 1490  
*Male Saint*



**KRESS CATALOGUE NUMBER**

K441A

**IDENTIFIER**

3499

**ARTIST**

Diamante, Fra, c. 1430-c. 1490

**NATIONALITY**

Italian

**DATE**

c. 1470

**MEDIUM**

tempera and gilding on panel

**TYPE OF OBJECT**

Painting

**DIMENSIONS**

48.6 x 13.4 cm (19-1/8 x 5-1/4 in)

**LOCATION**

Honolulu Museum of Art, Honolulu, Hawaii

**HISTORICAL ATTRIBUTION**

Lippi, Filippo, Fra, c. 1406-1469

**PROVENANCE**

Possibly Santa Maria del Carmine, Florence. Anonymous Collection, Florence; acquired mid-nineteenth century by Sir John Leslie [1822- 1916] 1st Bart, Glaslough House, Monaghan, Northern Ireland; by inheritance to Sir John Leslie [1857-1944], 2nd Bart., Glaslough House, Monaghan; (sale, Christie's, London, 9 July 1926, no. 129, as Filippino Lippi); (W. Buckley). Arthur Hamilton Lee [1857-1944], 1st Viscount of Fareham, Old Quarries, Gloucestershire, England. (Count Alessandro Contini Bonacossi [1878-1955] Rome-Florence); sold to Samuel H. Kress [1863-1955] on 10 October 1935 as Fra Filippo Lippi; gift 1939 to the National Gallery of

# KRESS COLLECTION DIGITAL ARCHIVE

Art; deaccessioned in 1952 and returned to the Samuel H. Kress Foundation; gift to Honolulu Academy of Arts (now Honolulu Museum of Art) in 1961, no. 2983.1 and 2984.1.

## ACCESSION NUMBER

2983.1

## KRESS NUMBER

441A

## PICHETTO NUMBER

9115A

## LEGACY NGA NUMBER

354

---

## 1 ACQUISITION

Contini Bonacossi, Alessandro, October 18, 1936 [1]

---

## 3 DISTRIBUTIONS

Gift to National Gallery of Art, June 29, 1939

Deaccession by National Gallery of Art, February 21, 1952

Gift to Honolulu Academy of Arts, December 09, 1961

---

## EXTERNAL LINKS

### Related National Gallery of Art Library Image Collections Record

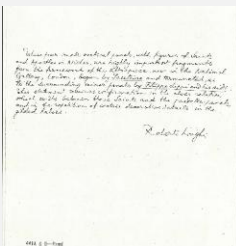
[https://library.nga.gov/permalink/01NGA\\_INST/1p5jkkvq/alma99421523804896](https://library.nga.gov/permalink/01NGA_INST/1p5jkkvq/alma99421523804896)

---

## 10 ARCHIVAL ITEMS

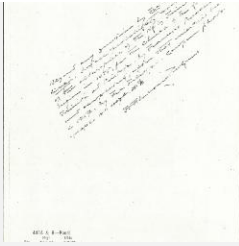


K0441A - Expert opinion by Berenson, circa 1920s-1950s

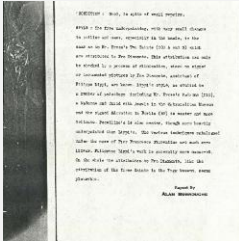


K0441A - Expert opinion by Longhi, circa 1920s-1950s

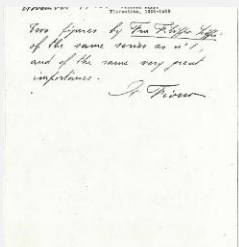
# KRESS COLLECTION DIGITAL ARCHIVE



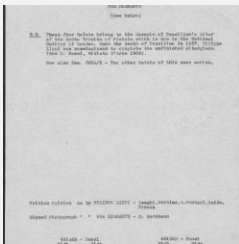
K0441A - Expert opinion by Perkins, circa 1920s-1940s



K0441A - Alan Burroughs report, circa 1930s-1940s



K0441A - Expert opinion by Fiocco, circa 1930s-1940s



K0441A - Art object record, circa 1930s-1950s



K0441A - Photograph, circa 1930s-1960s

# KRESS COLLECTION DIGITAL ARCHIVE



K0441A - Expert opinion by A. Venturi, 1936



K0441A - National Gallery of Art mounted photograph, circa 1940s-1950s



K0441A - Condition and restoration record, circa 1950s-1960s

## RELATED ART OBJECT



K441A  
Fra Diamante  
*Male Saint*  
Honolulu Museum of Art, Honolulu, Hawaii

## RECORD LINK

<https://kress.nga.gov/Detail/objects/3499>