

Louis Le Nain, c. 1600/1603-1648
Peasant Interior



KRESS CATALOGUE NUMBER

K1418

IDENTIFIER

35

ARTIST

Le Nain, Louis, c. 1600/1603-1648

NATIONALITY

French

DATE

c. 1645

MEDIUM

oil on canvas

TYPE OF OBJECT

Painting

DIMENSIONS

55.6 x 64.7 cm (21 7/8 x 25 1/2 in)

LOCATION

National Gallery of Art, Washington, District of Columbia

PROVENANCE

In France during the 18th century. [1] George Godolphin Osborne, 10th duke of Leeds [1862-1927], Hornby Castle, near Bedale, Yorkshire, by 1902; [2] by inheritance to his, John Francis Godolphin Osborne, 11th duke of Leeds [1901-1963], Hornby Castle; sold December 1945 to (Wildenstein & Co., Inc., Paris, New York, and London); [3] sold December 1946 to the Samuel H. Kress Foundation, New York; gift 1952 to NGA. [1] The painting was engraved in reverse by Catherine Elise Lempeurer in the mid-18th century under the title *Le Bénédicité flamant*. In the catalogues for the 1910, 1934, and 1938 exhibitions in which it was included, the painting is listed as from the Duc d'Orleans collection, but no painting by Le Nain is recorded in that collection, unless it was given to another artist. [2] *Historical and Descriptive Catalogue of Pictures Belonging to the Duke of Leeds*, London, 1902: 40, no. 201, as *Flemish Interior* by Le Nain. It is not known when the painting entered this collection; no mention of it was found in documents relating to the art collection in the estate papers of the Dukes of Leeds held by the Yorkshire Archaeological Society, Leeds, England (see e-mails of 20 and 28 October 2008, from Kirsty McHugh, archivist, to Anne Halpern, in NGA curatorial files). [3] During the preparation of the NGA systematic catalogue of its French paintings of the 15th to 18th centuries, Joseph Baillio of

KRESS COLLECTION DIGITAL ARCHIVE

Wildenstein & Co. kindly provided the date when the company acquired the painting from the Duke of Leeds.

ACCESSION NUMBER

1952.2.20

KRESS NUMBER

1418

LEGACY NGA NUMBER

1103

NGA LOAN NUMBER

91

1 ACQUISITION

Wildenstein and Company, December 23, 1946

1 DISTRIBUTION

Gift to National Gallery of Art, February 21, 1952

EXTERNAL LINKS**Related Collection Record**

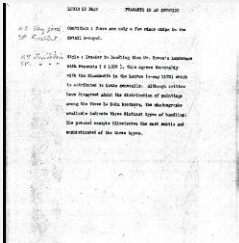
<https://www.nga.gov/collection/art-object-page.41603.html>

Related National Gallery of Art Library Image Collections Record

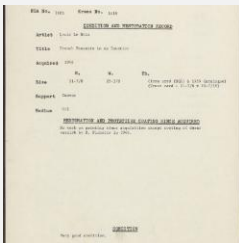
https://library.nga.gov/permalink/01NGA_INST/1p5jkvq/alma9946163804896

Related National Gallery of Art Systematic Catalog

https://library.nga.gov/permalink/01NGA_INST/1cl1g8d/alma992891233504896

3 ARCHIVAL ITEMS

K1418 - Alan Burroughs report, circa 1930s-1940s



K1418 - Condition and restoration record, circa 1950s-1960s

