

**Master of the Loeser Madonna, active c. 1340**  
***Saint Claire***



**KRESS CATALOGUE NUMBER**

K447

**IDENTIFIER**

3505

**ARTIST**

Master of the Loeser Madonna, active c. 1340

**NATIONALITY**

Italian

**DATE**

1335

**MEDIUM**

tempera on panel

**TYPE OF OBJECT**

Painting

**DIMENSIONS**

59.7 x 28.4 cm (23-1/2 x 11-3/16 in)

**LOCATION**

Georgia Museum of Art, The University of Georgia, Athens, Georgia

**HISTORICAL ATTRIBUTION**

Lorenzetti, Pietro, active 1306-1345

**PROVENANCE**

Achillito Chiesa, Milan. [1] (Count Alessandro Contini Bonacossi [1878-1955] Rome-Florence) by 1933; [2] sold to Samuel H. Kress [1863-1955] on 18 October 1936; gift to the National Gallery of Art in 1939; deaccessioned in 1952 and returned to the Samuel H. Kress Foundation; gift 1961 to the Georgia Museum of Art, University of Georgia, Athens, no R-1. [1] The painting was not included in any of the Chiesa Collection sales at the American Art Association in New York between 1925-1927. [2] Published as with Contini

# KRESS COLLECTION DIGITAL ARCHIVE

in La Diana VIII (1933): 176.

**ACCESSION NUMBER**

1961.189

**KRESS NUMBER**

447

**PICHETTO NUMBER**

9113

**LEGACY NGA NUMBER**

360

**1 ACQUISITION**

Contini Bonacossi, Alessandro, October 18, 1936 [1]

**3 DISTRIBUTIONS**

Gift to National Gallery of Art, June 29, 1939

Deaccession by National Gallery of Art, October 15, 1952

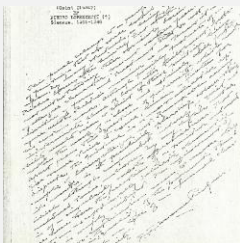
Gift to Georgia Museum of Art, The University of Georgia, December 09, 1961

**EXTERNAL LINKS****Related National Gallery of Art Library Image Collections Record**

[https://library.nga.gov/permalink/01NGA\\_INST/1p5jkvq/alma99412633804896](https://library.nga.gov/permalink/01NGA_INST/1p5jkvq/alma99412633804896)

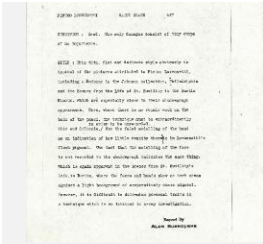
**12 ARCHIVAL ITEMS**

K0447 - Expert opinion by Berenson, circa 1920s-1950s

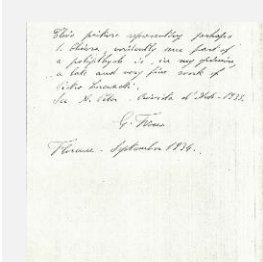


K0447 - Expert opinion by Perkins, circa 1920s-1940s

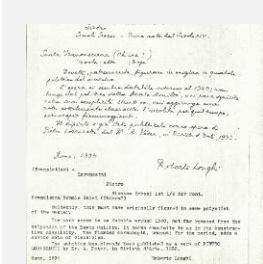
# KRESS COLLECTION DIGITAL ARCHIVE



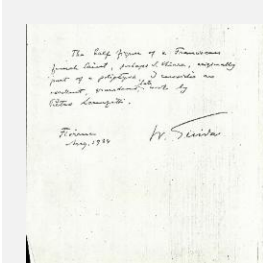
K0447 - Alan Burroughs report, circa 1930s-1940s



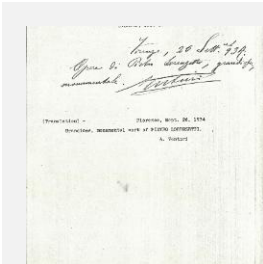
K0447 - Expert opinion by Fiocco, 1934



K0447 - Expert opinion by Longhi, 1934

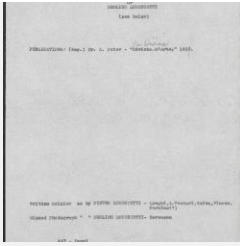


K0447 - Expert opinion by Suida, 1934



K0447 - Expert opinion by A. Venturi, 1934

# KRESS COLLECTION DIGITAL ARCHIVE



K0447 - Art object record, circa 1930s-1950s



K0447 - Photograph, circa 1930s-1960s



K0447 - Photograph, circa 1930s-1960s



K0447 - National Gallery of Art mounted photograph, circa 1940s-1950s



K0447 - Condition and restoration record, circa 1950s-1960s

## RECORD LINK

<https://kress.nga.gov/Detail/objects/3505>