

Luca Signorelli, 1445/1450-1523
Birth of St. Nicholas of Bari



KRESS CATALOGUE NUMBER

K494

IDENTIFIER

3523

ARTIST

Signorelli, Luca, 1445/1450-1523

NATIONALITY

Italian

DATE

c. 1500-20

MEDIUM

oil on panel

TYPE OF OBJECT

Painting

DIMENSIONS

25.1 x 20.3 cm (9-7/8 x 8 in)

LOCATION

High Museum of Art, Atlanta, Georgia

PROVENANCE

(Count Alessandro Contini Bonacossi [1878-1955] Rome-Florence); sold to Samuel H. Kress [1863-1955] on 18 June 1937; gift to the National Gallery of Art in 1939; deaccessioned in 1952 and returned to the Samuel H. Kress Foundation; gift to High Museum of Art, Atlanta, no. 58.53.

KRESS COLLECTION DIGITAL ARCHIVE

ACCESSION NUMBER

58.54

KRESS NUMBER

494

PICHETTO NUMBER

9378

LEGACY NGA NUMBER

387

1 ACQUISITION

Contini Bonacossi, Alessandro, June 18, 1937

3 DISTRIBUTIONS

Gift to National Gallery of Art, June 29, 1939

Deaccession by National Gallery of Art, October 15, 1952

Gift to High Museum of Art, December 09, 1961

EXTERNAL LINKS**Related Collection Record**

<https://www.high.org/collections/birth-of-st-nicholas-of-bari/>

Related National Gallery of Art Library Image Collections Record

https://library.nga.gov/permalink/01NGA_INST/1p5jkvq/alma991595773804896

12 ARCHIVAL ITEMS

K0494 - Expert opinion by Berenson, circa 1920s-1950s

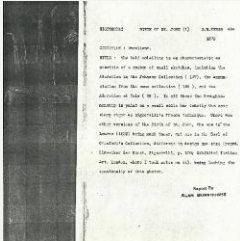


K0494 - Expert opinion by Perkins, circa 1920s-1940s

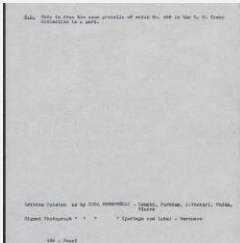
KRESS COLLECTION DIGITAL ARCHIVE



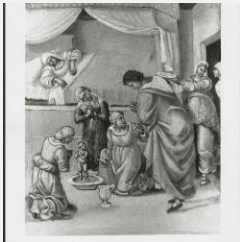
K0494 - Expert opinion by A. Venturi, circa 1920s-1930s



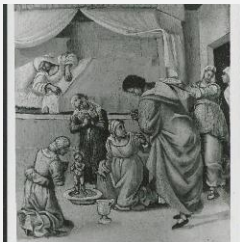
K0494 - Alan Burroughs report, circa 1930s-1940s



K0494 - Art object record, circa 1930s-1950s

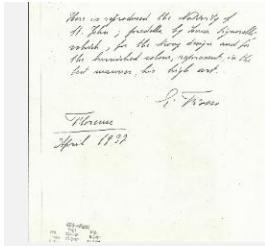


K0494 - Photograph, circa 1930s-1960s



K0494 - Photograph, circa 1930s-1960s

KRESS COLLECTION DIGITAL ARCHIVE



K0494 - Expert opinion by Fiocco, 1937



K0494 - Expert opinion by Longhi, 1937



K0494 - Expert opinion by Suida, 1937



K0494 - National Gallery of Art mounted photograph, circa 1940s-1950s



K0494 - Condition and restoration record, circa 1950s-1960s

RECORD LINK

<https://kress.nga.gov/Detail/objects/3523>