

Follower of Giovanni Battista Tiepolo
The Child Moses Spurns the Crown of Pharaoh



KRESS CATALOGUE NUMBER

K5

IDENTIFIER

3527

ARTIST

Tiepolo, Giovanni Battista, 1696-1770
Anonymous Artist

NATIONALITY

Italian

DATE

c. 1750-1755

MEDIUM

oil on canvas

TYPE OF OBJECT

Painting

DIMENSIONS

58.1 x 44.1 cm (22-7/8 x 17-3/8 in)

LOCATION

Mead Art Museum, Amherst College, Amherst, Massachusetts

PROVENANCE

Mrs. Francis Vere Wright, Shelton Hall, Newark, Nottinghamshire. (Count Alessandro Contini Bonacossi [1878-1955] Rome-Florence); sold to Samuel H. Kress as Follower of Giovan Battista Tiepolo on 13 May 1929; gift 1939 to the National Gallery of Art; deaccessioned 1952 and returned to the Samuel H. Kress Foundation; gift to Mead Art Museum, Amherst College, no. AC 1962.3.

ACCESSION NUMBER

KRESS COLLECTION DIGITAL ARCHIVE

AC 1962.3

KRESS NUMBER

5

LEGACY NGA NUMBER

117

2 ACQUISITIONS

Contini Bonacossi, Alessandro, May 13, 1929

Contini Bonacossi, Alessandro, June 27, 1934

3 DISTRIBUTIONS

Gift to National Gallery of Art, June 29, 1939

Deaccession by National Gallery of Art, October 15, 1952

Gift to Mead Art Museum, Amherst College, January 04, 1962

EXTERNAL LINKS

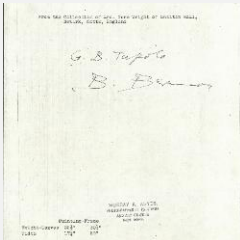
Related Collection Record

<http://museums.fivecolleges.edu/detail.php?museum=all&t=objects&type=all&f=&s=ac+1962.3&record=0>

Related National Gallery of Art Library Image Collections Record

https://library.nga.gov/permalink/01NGA_INST/1p5jkvq/alma99767393804896

12 ARCHIVAL ITEMS

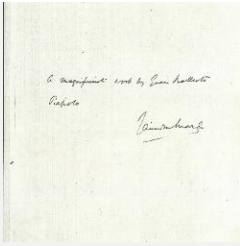


K0005 - Expert opinion by Berenson, circa 1920s-1950s



K0005 - Expert opinion by Longhi, circa 1920s-1950s

KRESS COLLECTION DIGITAL ARCHIVE



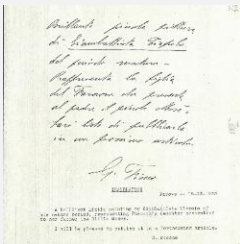
K0005 - Expert opinion by Marle, circa 1920s-1930s



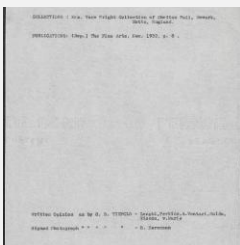
K0005 - Expert opinion by Perkins et al., circa 1920s-1940s



K0005 - Alan Burroughs report, circa 1930s-1940s



K0005 - Expert opinion by Fiocco, 1933



K0005 - Art object record, circa 1930s-1950s

KRESS COLLECTION DIGITAL ARCHIVE



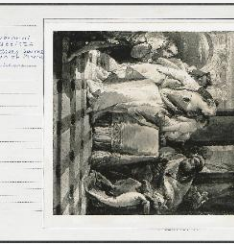
K0005 - Photograph, circa 1930s-1960s



K0005 - Photograph, circa 1930s-1960s



K0005 - Expert opinion by Suida, 1935



K0005 - National Gallery of Art mounted photograph, circa 1940s-1950s



K0005 - Condition and restoration record, circa 1950s-1960s

RECORD LINK

<https://kress.nga.gov/Detail/objects/3527>