

Giovanni di Paolo, c. 1403-1482

Saint John the Evangelist, the Assumption of the Virgin, and Saint Ansanus



KRESS CATALOGUE NUMBER

K500

IDENTIFIER

3529

ARTIST

Giovanni di Paolo, c. 1403-1482

NATIONALITY

Italian

DATE

c. 1455

MEDIUM

tempera and gold on panel

TYPE OF OBJECT

Painting

DIMENSIONS

18.8 x 48.3 cm (7-3/8 x 19 in)

LOCATION

El Paso Museum of Art, El Paso, Texas

PROVENANCE

Johann Anton Ramboux [1790-1866], Cologne; (his sale, Lempertz, Cologne, 23 May 1867, no. 128); Prof. Dr. Alexander Schnütgen [1843-1918], Cologne; gift to the Schnütgen Museum, Cologne in 1906; to the Wallraf-Richartz Museum, Cologne until at least 1918; (A.S.Drey, Munich), by 1920. [1] (Paul Bottenwieser, Berlin). (Durlacher Brothers, New York); sold to Richard Ederheimer Esq. on 17 January 1929. [2] (Count Alessandro Contini Bonacossi [1878-1955], Rome-Florence); sold to Samuel H. Kress [1863-1955] on 20 October 1937 as Vecchietta; gift to the National Gallery of Art in 1939; deaccessioned in 1952 and returned to the Samuel H. Kress Foundation; gift to El Paso Museum of Art, no. 1961.1.9. [1] Not included in the sale of the A.S. Drey gallery held at Graupe, Berlin, 17 June 1936. [2] Durlacher Brothers Records, 1919-1973, Getty Research Institute, Los Angeles, Record number 950003, Series II, Box 4, Folder 5.

ACCESSION NUMBER

1961.1.9

KRESS NUMBER

500

PICHETTO NUMBER

9541

LEGACY NGA NUMBER

1 ACQUISITION

Contini Bonacossi, Alessandro, October 20, 1937

3 DISTRIBUTIONS

Gift to National Gallery of Art, June 29, 1939

Deaccession by National Gallery of Art, October 15, 1952

Gift to El Paso Museum of Art, December 09, 1961

EXTERNAL LINKS

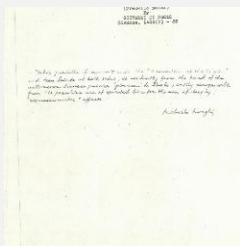
Related National Gallery of Art Library Image Collections Record

https://library.nga.gov/permalink/01NGA_INST/1p5jkvq/alma99413053804896

12 ARCHIVAL ITEMS



K0500 - Expert opinion by Berenson, circa 1920s-1950s

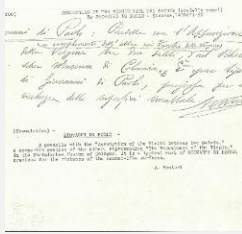


K0500 - Expert opinion by Longhi, circa 1920s-1950s

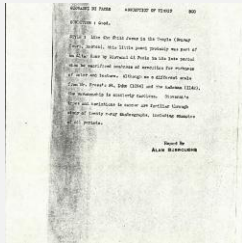


K0500 - Expert opinion by Perkins, circa 1920s-1940s

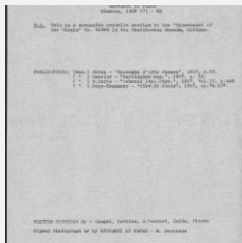
KRESS COLLECTION DIGITAL ARCHIVE



K0500 - Expert opinion by A. Venturi, circa 1920s-1930s



K0500 - Alan Burroughs report, circa 1930s-1940s



K0500 - Art object record, circa 1930s-1950s

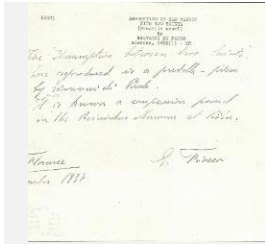


K0500 - Photograph, circa 1930s-1960s

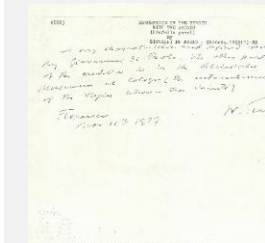


K0500 - Photograph, circa 1930s-1960s

KRESS COLLECTION DIGITAL ARCHIVE



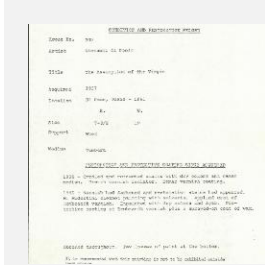
K0500 - Expert opinion by Fiocco, 1937



K0500 - Expert opinion by Suida, 1937



K0500 - National Gallery of Art mounted photograph, circa 1940s-1950s



K0500 - Condition and restoration record, circa 1950s-1960s

RECORD LINK

<https://kress.nga.gov/Detail/objects/3529>