

Sano di Pietro, 1405-1481

*Madonna and Child with Saint John the Baptist, Saint Bartholomew, and Four Angels [obverse]; Emblem of St. Bernardine [reverse]*



**KRESS CATALOGUE NUMBER**

K522

**IDENTIFIER**

3541

**ARTIST**

Sano di Pietro, 1405-1481

**NATIONALITY**

Italian

**DATE**

c. 1460s-70s

**MEDIUM**

tempera and gold on panel

**TYPE OF OBJECT**

Painting

**DIMENSIONS**

with mldg.: 63.5 x 45.7; 79.4 x 64.8 cm (25 x 18; 31-1/4 x 25 1/2 in)

**LOCATION**

El Paso Museum of Art, El Paso, Texas

**PROVENANCE**

(Count Alessandro Contini Bonacossi, [1878-1955], Rome-Florence); sold to Samuel H. Kress [1863-1955] on 16 September 1938; gift to El Paso Museum of Art in 1961, no.1961.1.8.

**ACCESSION NUMBER**

1961.1.8

**KRESS NUMBER**

522

---

**1 ACQUISITION**

Contini Bonacossi, Alessandro, September 16, 1938 [2]

---

**1 DISTRIBUTION**

Gift to El Paso Museum of Art, December 09, 1961

---

**EXTERNAL LINKS**

**Related National Gallery of Art Library Image Collections Record**

[https://library.nga.gov/permalink/01NGA\\_INST/1p5jkvq/alma99413103804896](https://library.nga.gov/permalink/01NGA_INST/1p5jkvq/alma99413103804896)

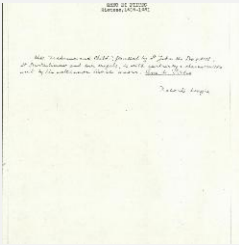
---

**9 ARCHIVAL ITEMS**

# KRESS COLLECTION DIGITAL ARCHIVE



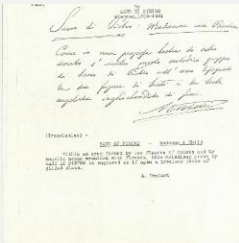
K0522 - Expert opinion by Berenson, circa 1920s-1950s



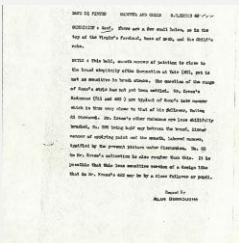
K0522 - Expert opinion by Longhi, circa 1920s-1950s



K0522 - Expert opinion by Perkins, circa 1920s-1940s

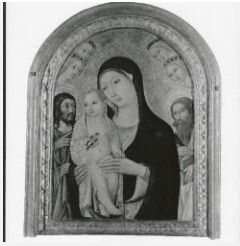


K0522 - Expert opinion by A. Venturi, circa 1920s-1930s

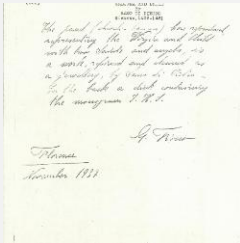


K0522 - Alan Burroughs report, circa 1930s-1940s

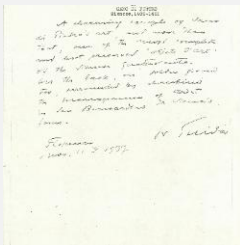
# KRESS COLLECTION DIGITAL ARCHIVE



K0522 - Photograph, circa 1930s-1960s



K0522 - Expert opinion by Fiocco, 1937



K0522 - Expert opinion by Suida, 1937



K0522 - Condition and restoration record, circa 1950s-1960s

## RECORD LINK

<https://kress.nga.gov/Detail/objects/3541>