

Lorenzo Veneziano, active c. 1356-1372
Madonna and Christ Child



KRESS CATALOGUE NUMBER

K526

IDENTIFIER

3546

ARTIST

Lorenzo Veneziano, active c. 1356-1372

NATIONALITY

Italian

DATE

about 1370

MEDIUM

tempera on panel

TYPE OF OBJECT

Painting

DIMENSIONS

85.9 x 61.7 cm (33-7/8 x 24-1/4 in)

LOCATION

Birmingham Museum of Art, Birmingham, Alabama

PROVENANCE

Achillito Chiesa, Milan; (Count Alessandro Contini Bonacossi [1878-1955] Rome-Florence); sold to Samuel H. Kress [1863-1955] on 16 September 1938 as Lorenzo Veneziano; gift to the National Gallery of Art in 1939; deaccessioned in 1952 and returned to the Samuel H. Kress Foundation; gift to Birmingham Museum of Art in 1961, no. 61.100.

KRESS COLLECTION DIGITAL ARCHIVE

ACCESSION NUMBER

1961.1

KRESS NUMBER

526

LEGACY NGA NUMBER

411

1 ACQUISITION

Contini Bonacossi, Alessandro, September 16, 1938 [2]

3 DISTRIBUTIONS

Gift to National Gallery of Art, June 29, 1939

Deaccession by National Gallery of Art, February 21, 1952

Gift to Birmingham Museum of Art, December 09, 1961

EXTERNAL LINKS**Related Collection Record**

<https://artsbma.org/collection/madonna-and-christ-child-2/>

Related National Gallery of Art Library Image Collections Record

https://library.nga.gov/permalink/01NGA_INST/1p5jvkq/alma991595963804896

13 ARCHIVAL ITEMS

K0526 - Expert opinion by Berenson, circa 1920s-1950s

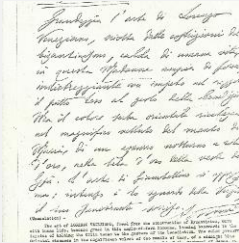


K0526 - Expert opinion by Longhi, circa 1920s-1950s

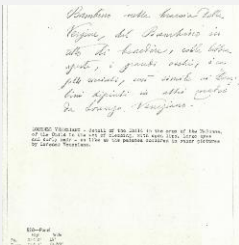
KRESS COLLECTION DIGITAL ARCHIVE



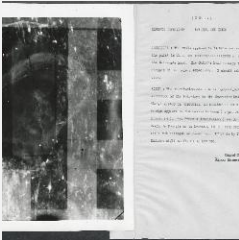
K0526 - Expert opinion by Perkins, circa 1920s-1940s



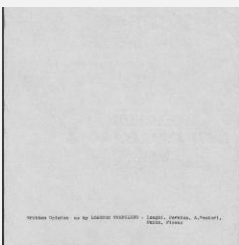
K0526 - Expert opinion by A. Venturi, circa 1920s-1930s



K0526 - Expert opinion, circa 1920s-1960s



K0526 - Alan Burroughs report, circa 1930s-1940s

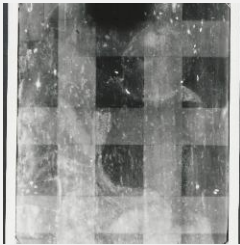


K0526 - Art object record, circa 1930s-1950s

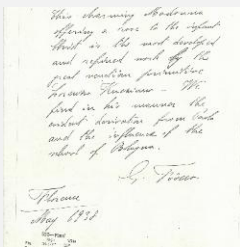
KRESS COLLECTION DIGITAL ARCHIVE



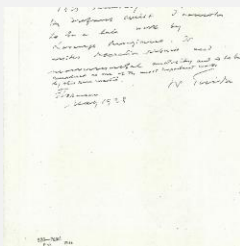
K0526 - Photograph, circa 1930s-1960s



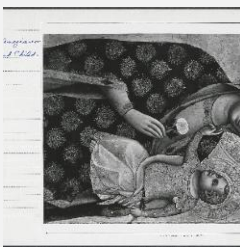
K0526 - Photograph, circa 1930s-1960s



K0526 - Expert opinion by Fiocco, 1938



K0526 - Expert opinion by Suida, 1938



K0526 - National Gallery of Art mounted photograph, circa 1940s-1950s

KRESS COLLECTION DIGITAL ARCHIVE



K0526 - Condition and restoration record, circa 1950s-1960s

RECORD LINK

<https://kress.nga.gov/Detail/objects/3546>