

School of Barnaba da Modena
The Crucifixion



KRESS CATALOGUE NUMBER

K527

IDENTIFIER

3547

ARTIST

Barnaba da Modena, active 1361-1383
Anonymous Artist

NATIONALITY

Italian

DATE

c. 1370

MEDIUM

tempera on panel

TYPE OF OBJECT

Painting

DIMENSIONS

59.7 x 36.5 cm (23-1/2 x 14-3/8 in)

LOCATION

Bowdoin College Museum of Art, Brunswick, Maine

PROVENANCE

(Count Alessandro Alessandro Contini Bonacossi [1878-1955] Rome-Florence); sold to Samuel H. Kress [1863-1955] on 16 September 1939; gift to the National Gallery of Art in 1939; deaccessioned in 1952 and returned to the Samuel H. Kress Foundation; gift to Bowdoin College Museum of Art, no. 1961.100.002

ACCESSION NUMBER

KRESS COLLECTION DIGITAL ARCHIVE

1961.100.2

KRESS NUMBER

527

PICHETTO NUMBER

9868

LEGACY NGA NUMBER

412

1 ACQUISITION

Contini Bonacossi, Alessandro, September 16, 1938 [2]

3 DISTRIBUTIONS

Gift to National Gallery of Art, June 29, 1939

Deaccession by National Gallery of Art, October 15, 1952

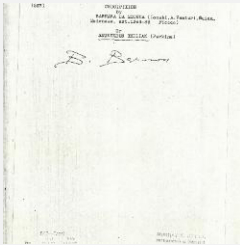
Gift to Bowdoin College Museum of Art, December 09, 1961

EXTERNAL LINKS

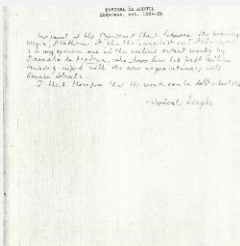
Related National Gallery of Art Library Image Collections Record

https://library.nga.gov/permalink/01NGA_INST/1p5jvkq/alma99413143804896

12 ARCHIVAL ITEMS

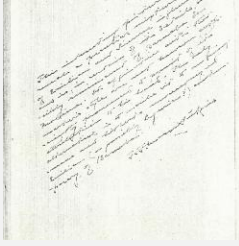


K0527 - Expert opinion by Berenson, circa 1920s-1950s

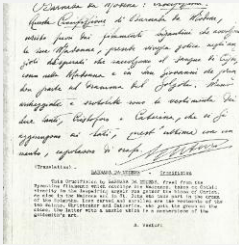


K0527 - Expert opinion by Longhi, circa 1920s-1950s

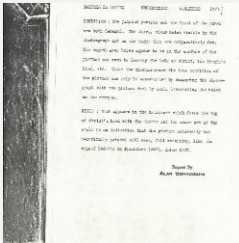
KRESS COLLECTION DIGITAL ARCHIVE



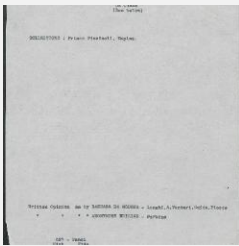
K0527 - Expert opinion by Perkins, circa 1920s-1940s



K0527 - Expert opinion by A. Venturi, circa 1920s-1930s



K0527 - Alan Burroughs report, circa 1930s-1940s



K0527 - Art object record, circa 1930s-1950s

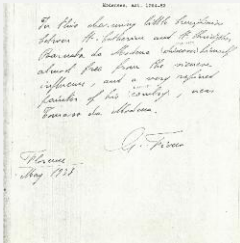


K0527 - Photograph, circa 1930s-1960s

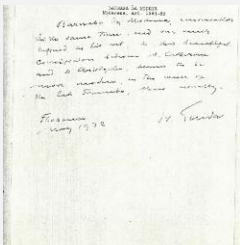
KRESS COLLECTION DIGITAL ARCHIVE



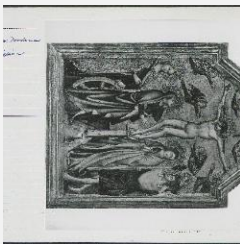
K0527 - Photograph, circa 1930s-1960s



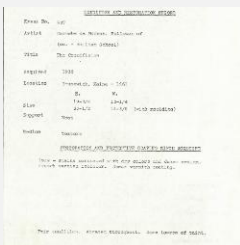
K0527 - Expert opinion by Fiocco, 1938



K0527 - Expert opinion by Suida, 1938



K0527 - National Gallery of Art mounted photograph, circa 1940s-1950s



K0527 - Condition and restoration record, circa 1950s-1960s

RECORD LINK

<https://kress.nga.gov/Detail/objects/3547>