

Apollonia di Giovanni and Marco del Buono Giamberti  
*Madonna and Child with Four Angels*



**KRESS CATALOGUE NUMBER**

K528

**IDENTIFIER**

3548

**ARTIST**

Apollonia di Giovanni, ca. 1415 or 1417-1465  
Giamberti, Marco del Buono, 1402-1489

**NATIONALITY**

Italian

**DATE**

1450

**MEDIUM**

tempera on panel

**TYPE OF OBJECT**

Painting

**DIMENSIONS**

70.8 x 46.7 cm (28 x 18-7/8 in)

**LOCATION**

Doris Ulmann Galleries, Berea College, Berea, KY

**ACCESSION NUMBER**

140.11

**KRESS NUMBER**

528

**LEGACY NGA NUMBER**

---

**1 ACQUISITION**

Contini Bonacossi, Alessandro, September 16, 1938 [2]

---

**4 DISTRIBUTIONS**

Gift to National Gallery of Art, June 29, 1939

Transfer to auxiliary collection by National Gallery of Art, March 31, 1943

Deaccession by National Gallery of Art, February 21, 1952

Gift to Doris Ulmann Galleries, Berea College, December 09, 1961

---

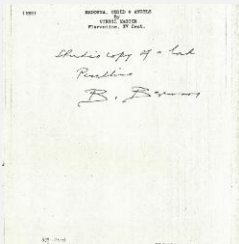
**EXTERNAL LINKS**

**Related National Gallery of Art Library Image Collections Record**

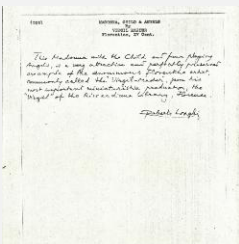
[https://library.nga.gov/permalink/01NGA\\_INST/1p5jkvq/alma99413163804896](https://library.nga.gov/permalink/01NGA_INST/1p5jkvq/alma99413163804896)

---

**13 ARCHIVAL ITEMS**



K0528 - Expert opinion by Berenson, circa 1920s-1950s

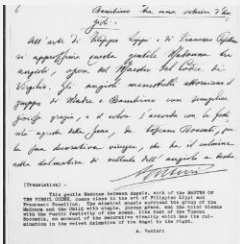


K0528 - Expert opinion by Longhi, circa 1920s-1950s



K0528 - Expert opinion by Perkins, circa 1920s-1940s

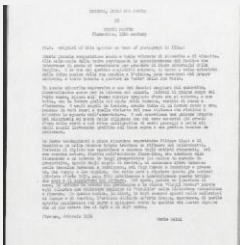
# KRESS COLLECTION DIGITAL ARCHIVE



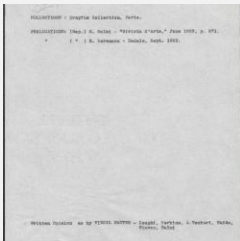
K0528 - Expert opinion by A. Venturi, circa 1920s-1930s



K0528 - Alan Burroughs report, circa 1930s-1940s



K0528 - Expert opinion by Salmi, 1931



K0528 - Art object record, circa 1930s-1950s

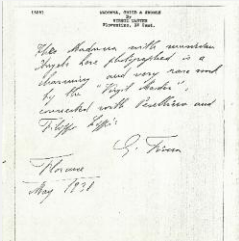


K0528 - Photograph, circa 1930s-1960s

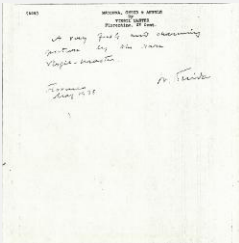
# KRESS COLLECTION DIGITAL ARCHIVE



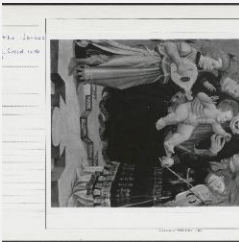
K0528 - Photograph, circa 1930s-1960s



K0528 - Expert opinion by Fiocco, 1938



K0528 - Expert opinion by Suida, 1938



K0528 - National Gallery of Art mounted photograph, circa 1940s-1950s



K0528 - Condition and restoration record, circa 1950s-1960s

## RECORD LINK

<https://kress.nga.gov/Detail/objects/3548>