

Cariani, 1485/1490-1547 or after
Portrait of a Gentleman Wearing a Gold Chain



KRESS CATALOGUE NUMBER

K534

IDENTIFIER

3552

ARTIST

Cariani, 1485/1490-1547 or after

NATIONALITY

Italian

DATE

c. 1525-30

MEDIUM

oil on canvas

TYPE OF OBJECT

Painting

DIMENSIONS

77.2 x 80.3 cm (30-3/8 x 31-5/8 in)

LOCATION

North Carolina Museum of Art, Raleigh, North Carolina

PROVENANCE

Conte del Mayno, Milan, as Titian; Robert Stayner Holford [1808-1892], Westonbirt, Gloucestershire and Dorchester House, London; by inheritance to Sir George Lindsay Holford [1860-1926], Westonbirt, as Romanino?; [2] (Holford sale, Christie's, London, 15 July 1927, no. 91); Modigliani. (Adolfo Werner, Milan), by 1930; Fejer de Buck, Rome. [1] (Count Alessandro Contini Bonacossi [1878-1955], Rome-Florence); sold 1938 to the Samuel H. Kress Foundation, New York, gift 1939 to the National Gallery of Art; deaccessioned 1952 and returned to the Samuel H. Kress Foundation; gift to North Carolina Museum of Art, no. GL.60.17.44. [1] No information has been located about Fejer de Buck, from whom Contini-Bonacossi acquired two other paintings later sold to Kress (K306, now National Gallery of Art and K197, now Berea College). [2] Lent by Holford to an exhibition of old masters at the

KRESS COLLECTION DIGITAL ARCHIVE

Royal Gallery in London, 1895, as Cariani.

ACCESSION NUMBER

GL.60.17.44

KRESS NUMBER

534

PICHETTO NUMBER

9875

LEGACY NGA NUMBER

419

1 ACQUISITION

Contini Bonacossi, Alessandro, September 16, 1938 [2]

3 DISTRIBUTIONS

Gift to National Gallery of Art, June 29, 1939

Deaccession by National Gallery of Art, October 15, 1952

Gift to North Carolina Museum of Art, December 09, 1961

EXTERNAL LINKS

Related Collection Record

https://ncartmuseum.org/art/detail/portrait_of_a_gentleman_wearing_a_gold_chain

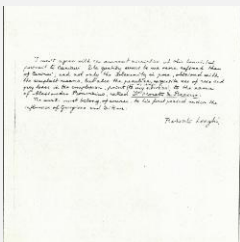
Related National Gallery of Art Library Image Collections Record

https://library.nga.gov/permalink/01NGA_INST/1p5jkvq/alma99413223804896

12 ARCHIVAL ITEMS

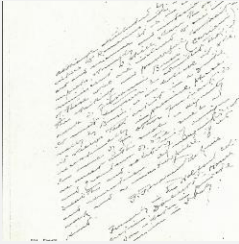


K0534 - Expert opinion by Berenson, circa 1920s-1950s

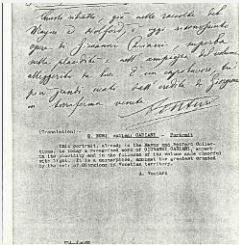


K0534 - Expert opinion by Longhi, circa 1920s-1950s

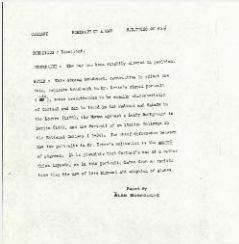
KRESS COLLECTION DIGITAL ARCHIVE



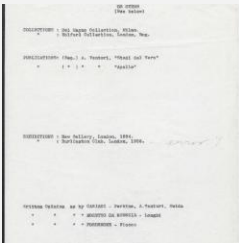
K0534 - Expert opinion by Perkins, circa 1920s-1940s



K0534 - Expert opinion by A. Venturi, circa 1920s-1930s



K0534 - Alan Burroughs report, circa 1930s-1940s



K0534 - Art object record, circa 1930s-1950s

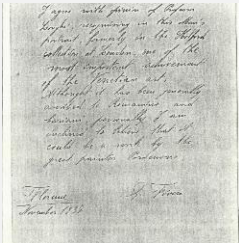


K0534 - Photograph, circa 1930s-1960s

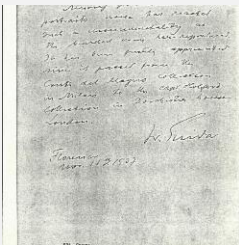
KRESS COLLECTION DIGITAL ARCHIVE



K0534 - Photograph, circa 1930s-1960s



K0534 - Expert opinion by Fiocco, 1937



K0534 - Expert opinion by Suida, 1937



K0534 - National Gallery of Art mounted photograph, circa 1940s-1950s



K0534 - Condition and restoration record, circa 1950s-1960s

RECORD LINK

<https://kress.nga.gov/Detail/objects/3552>