

Follower of Giotto
Crucifix



KRESS CATALOGUE NUMBER

K537

IDENTIFIER

3555

ARTIST

Giotto, c. 1265-1337
Anonymous Artist

NATIONALITY

Italian

DATE

1300-1400

MEDIUM

tempera on panel

TYPE OF OBJECT

Painting

DIMENSIONS

184.8 x 143.2 cm (72-3/4 x 56-3/8 in)

LOCATION

St. Philip's in the Hills, Tucson, Arizona

PROVENANCE

Conestabile, Perugia. (Count Alessandro Contini Bonacossi [1878-1955] Rome-Florence); sold to Samuel H. Kress [1863-1955] on 16 September 1938; gift 1962 to Saint Philip's in the Hills, Tucson.

KRESS COLLECTION DIGITAL ARCHIVE

KRESS NUMBER

537

1 ACQUISITION

Contini Bonacossi, Alessandro, September 16, 1938 [2]

1 DISTRIBUTION

Gift to St. Philip's in the Hills, December 09, 1961

EXTERNAL LINKS

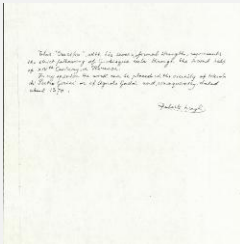
Related National Gallery of Art Library Image Collections Record

https://library.nga.gov/permalink/01NGA_INST/1p5jkvq/alma99413263804896

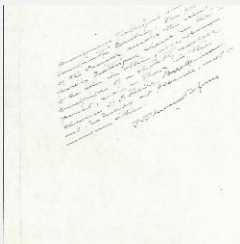
12 ARCHIVAL ITEMS



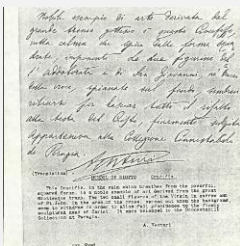
K0537 - Expert opinion by Berenson, circa 1920s-1950s



K0537 - Expert opinion by Longhi, circa 1920s-1950s

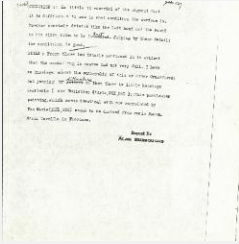


K0537 - Expert opinion by Perkins, circa 1920s-1940s

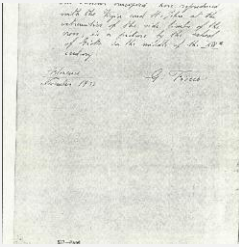


K0537 - Expert opinion by A. Venturi, circa 1920s-1930s

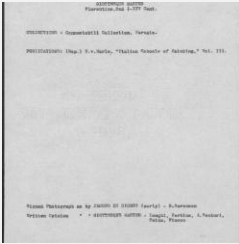
KRESS COLLECTION DIGITAL ARCHIVE



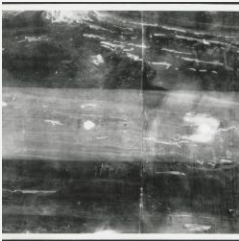
K0537 - Alan Burroughs report, circa 1930s-1940s



K0537 - Expert opinion by Fiocco, 1932



K0537 - Art object record, circa 1930s-1950s

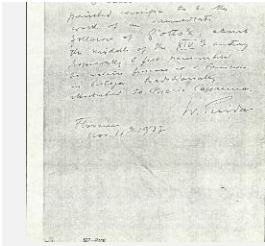


K0537 - Photograph, circa 1930s-1960s

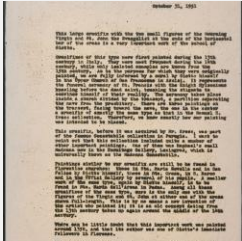


K0537 - Photograph, circa 1930s-1960s

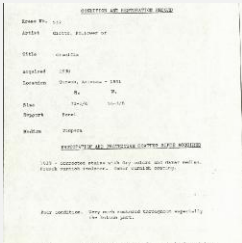
KRESS COLLECTION DIGITAL ARCHIVE



K0537 - Expert opinion by Suida, 1937



K0537 - Expert opinion by Suida, 1951



K0537 - Condition and restoration record, circa 1950s-1960s

RECORD LINK

<https://kress.nga.gov/Detail/objects/3555>