

Lorenzo Lotto, c. 1480-1556/1557
Saint Jerome in the Wilderness



KRESS CATALOGUE NUMBER

K595

IDENTIFIER

3588

ARTIST

Lotto, Lorenzo, c. 1480-1556/1557

NATIONALITY

Italian

DATE

1515

MEDIUM

oil on canvas

TYPE OF OBJECT

Painting

DIMENSIONS

39.4 x 32.1 cm (15-1/2 x 12-5/8 in)

LOCATION

Allentown Art Museum, Allentown, Pennsylvania

PROVENANCE

Probably Domenico Tassi dal Cornello, Bergamo, by 1525. Paolo Brognoli, Brescia, by 1820. (Otto Mündler [1811-1870], London and Paris). [1] Richard Nathaniel Curzon, 2nd Viscount Scarsdale [1898-1977]; [2] (sold, Christie's, London, 11 February 1938, no. 41). Mr. Waters. (Sale, Christie's, London, 28 July 1939, no. 146); purchased by Smith. [3] (Count Alessandro Contini Bonacossi [1878-1955], Rome and Florence); sold to Samuel H. Kress [1863-1955] on 13 March 1941; gift to the Allentown Art Museum in 1960, no. 1960.27. [1] Not included in the sale of Mündler's estate held at the Hôtel Drouot, Paris, on 27 November 1871, or mentioned in his travel diaries of 1855-1888 published by the Walpole Society in 1985. [2] Seller per annotated auctioneer

KRESS COLLECTION DIGITAL ARCHIVE

catalogue, Christie's Archive, London [3] Annotated sales catalogue in National Gallery of Art library.

ACCESSION NUMBER

1960.027.000

KRESS NUMBER

595

1 ACQUISITION

Contini Bonacossi, Alessandro, March 13, 1941 [2]

1 DISTRIBUTION

Gift to Allentown Art Museum, May 31, 1946

EXTERNAL LINKS

Related National Gallery of Art Library Image Collections Record

https://library.nga.gov/permalink/01NGA_INST/1p5jkvq/alma9976503804896

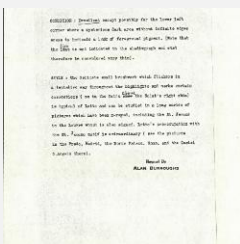
7 ARCHIVAL ITEMS



K0595 - Expert opinion by Perkins, circa 1920s-1940s

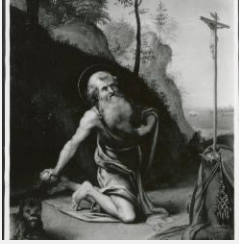


K0595 - Expert opinion by A. Venturi, circa 1920s-1930s



K0595 - Alan Burroughs report, circa 1930s-1940s

KRESS COLLECTION DIGITAL ARCHIVE



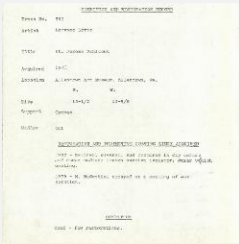
K0595 - Photograph, circa 1930s-1960s



K0595 - Photograph, circa 1930s-1960s



K0595 - National Gallery of Art mounted photograph, circa 1940s-1950s



K0595 - Condition and restoration record, circa 1950s-1960s

RECORD LINK

<https://kress.nga.gov/Detail/objects/3588>