

Tommaso, follower of Lorenzo di Credi
The Holy Family



KRESS CATALOGUE NUMBER

K99

IDENTIFIER

3623

ARTIST

Tommaso, active 15th century
Lorenzo di Credi, c. 1457/1459-1536

NATIONALITY

Italian

DATE

c. 1500

MEDIUM

oil on panel

TYPE OF OBJECT

Painting

DIMENSIONS

diameter: 119.4 cm (47 in)

LOCATION

Henry Art Gallery, University of Washington, Seattle, Washington

HISTORICAL ATTRIBUTION

Raffaellino del Garbo, 1466-1524

KRESS COLLECTION DIGITAL ARCHIVE

PROVENANCE

(Count Alessandro Contini Bonacossi [1878-1955], Florence); sold to Samuel H. Kress [1863-1955] on 16 July 1930 as Raffaellino del Garbo; gift to the Henry Art Gallery, University of Washington, Seattle, in 1932, no. 32.5.

ACCESSION NUMBER

FA 32.5

KRESS NUMBER

99

PICHETTO NUMBER

7179

1 ACQUISITION

Contini Bonacossi, Alessandro, July 16, 1930

1 DISTRIBUTION

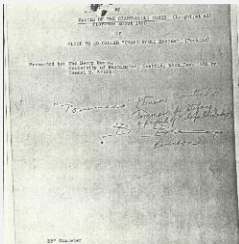
Gift to Seattle Art Museum, December 11, 1931

EXTERNAL LINKS

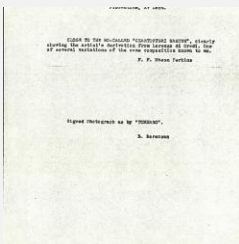
Related National Gallery of Art Library Image Collections Record

https://library.nga.gov/permalink/01NGA_INST/1p5jkvq/alma991097163804896

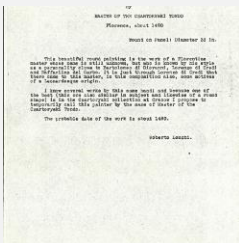
8 ARCHIVAL ITEMS



K0099 - Expert opinion by Berenson, circa 1920s-1950s



K0099 - Expert opinion by Berenson et al., circa 1920s-1950s

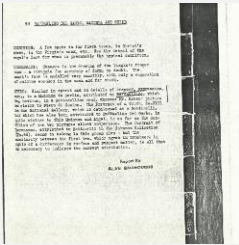


K0099 - Expert opinion by Longhi, circa 1920s-1950s

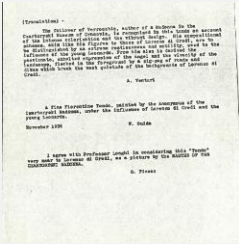
KRESS COLLECTION DIGITAL ARCHIVE



K0099 - Expert opinion by Suida, circa 1920s-1950s



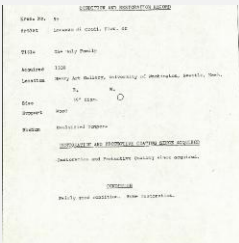
K0099 - Alan Burroughs report, circa 1930s-1940s



K0099 - Expert opinion by Fiocco et al., circa 1930s-1940s



K0099 - Photograph, circa 1930s-1960s



K0099 - Condition and restoration record, circa 1950s-1960s

RECORD LINK

<https://kress.nga.gov/Detail/objects/3623>