

Bernardo Strozzi, 1581/1582-1644
Bishop Alvise Grimani



KRESS CATALOGUE NUMBER

K1416

IDENTIFIER

392

ARTIST

Strozzi, Bernardo, 1581/1582-1644

NATIONALITY

Italian

DATE

1633 or after

MEDIUM

oil on canvas

TYPE OF OBJECT

Painting

DIMENSIONS

146.7 x 95.1 cm (57 3/4 x 37 7/16 in)

LOCATION

National Gallery of Art, Washington, District of Columbia

PROVENANCE

Possibly Countess Lauredana Gatterburg-Morosini [d. 1884], Venice; (her sale, Palazzo Morosini, Venice, 15-22 May 1894, no. 635). [1] (Stefano Bardini [1836-1922], Florence); (his sales, Christie, Manson & Woods, London, 26-30 May 1902, no. 603, as by Van Dyck, *Portrait of a Cardinal*[2] and American Art Galleries, New York, 23-27 April 1918, 3rd day, no. 465, as Italian School, *Portrait of a Spanish Cardinal*). [3] (E. & A. Silberman Galleries, New York); [4] purchased 1946 by the Samuel H. Kress Foundation, New York; [5] gift 1961 to NGA.

[1] The catalogue gives no dimensions, but describes the picture as a "portrait d'un évêque, représenté en pied, de face, grandeur nature, tenant un livre d'heures." Although no inscription is mentioned, this could also be the copy now in Genoa (see note 9). Many

KRESS COLLECTION DIGITAL ARCHIVE

of the items in the sale came from the Grimani collection, as the last member of the Grimani family had married a Morosini in the eighteenth century, as noted in the introduction to the catalogue and by Cesare Augusto Levi, *Le collezioni veneziane d'arte e d'antichità dal secolo XIV ai nostri giorni*, Venice, 1900: lv.

[2] No. 676 in the French edition of the catalogue. Both catalogues gave incorrect dimensions (187 x 185 cm or 78 x 53 in.).

[3] No documentation survives for the provenances of paintings purchased by Bardini; his surviving papers cover only the period 1905-1915. The Grimani portrait does not appear in earlier Bardini sales. Fiorenza Scalia and Cristina De Benedictis, *Il Museo Bardini a Firenze*, Milan, 1984: 65, 79.

[4] According to a note from Silberman (NGA curatorial files), the painting was in the Royal Palace, Budapest, until it was sold at auction in 1868; it subsequently passed to Count Ambroszy-Migaszy, Budapest, before being brought to the United States at an unknown date. It has not been possible to locate sales or other catalogues for these collections, and this information remains unverified.

[5] According to Fern Rusk Shapley, *Paintings from the Samuel H. Kress Collection: Italian Schools XVI-XVIII Century*, London, 1973: 88, and Fern Rusk Shapley, *Catalogue of Italian Paintings*, 2 vols., Washington, D.C., 1979: 1:136-137, and to notes in NGA curatorial files.

ACCESSION NUMBER

1961.9.41

KRESS NUMBER

1416

LEGACY NGA NUMBER

1403

1 ACQUISITION

E. and A. Silberman Galleries, December 7, 1946

1 DISTRIBUTION

Gift to National Gallery of Art, December 09, 1961

EXTERNAL LINKS

Related Collection Record

<https://www.nga.gov/collection/art-object-page.46140.html>

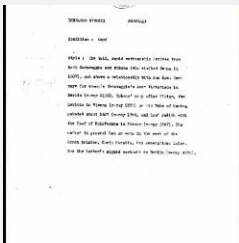
Related National Gallery of Art Library Image Collections Record

https://library.nga.gov/permalink/01NGA_INST/1p5jkvq/alma99163843804896

Related National Gallery of Art Systematic Catalog

<https://www.nga.gov/content/dam/ngaweb/research/publications/pdfs/italian-paintings-17th-and-18th-centuries.pdf>

5 ARCHIVAL ITEMS

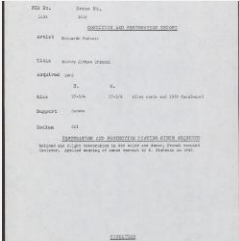


K1416 - Alan Burroughs report, circa 1930s-1940s

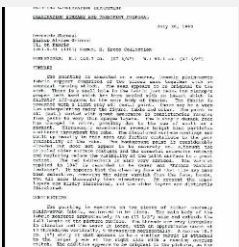
KRESS COLLECTION DIGITAL ARCHIVE



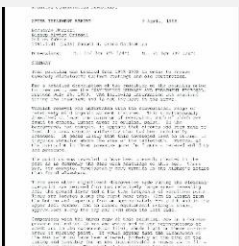
K1416 - Expert opinion by Suida, 1946



K1416 - Condition and restoration record, circa 1950s-1960s



K1416 - Examination summary and treatment proposal, 1990



K1416 - Treatment report, 1998

RECORD LINK

<https://kress.nga.gov/Detail/objects/392>