

Titian, 1488/1490-1576
Woman Holding an Apple



KRESS CATALOGUE NUMBER

K512

IDENTIFIER

1673

ARTIST

Titian, 1488/1490-1576

NATIONALITY

Italian

DATE

c. 1550

MEDIUM

oil on canvas

TYPE OF OBJECT

Painting

DIMENSIONS

97.8 x 73.8 cm (38 1/2 x 29 1/16 in)

LOCATION

National Gallery of Art, Washington, District of Columbia

PROVENANCE

Probably Michel Particelli d'Hémery [1596-1650], Paris; by inheritance to his son-in-law, Louis Phélypeaux de La Vrillière [1599-1681]. [1] George Wilbraham, M.P. [1779-1852], Delamere House, near Northwich, Cheshire, by 1829; [2] probably by inheritance to his son, George Fortescue Wilbraham [1815-1885], Delamere House, by 1883; [3] probably by inheritance to his son, Major Hugh Edward Wilbraham, M.B.E. [1857-1930], Delamere House, by 1914; [4] purchased January 1929 by (Duveen Brothers, Inc., London, New York, and Paris); [5] sold 1938 to the Samuel H. Kress Foundation, New York; [6] gift 1939 to NGA. [1] As first pointed out by Christel Haffner in an unpublished dissertation of 1983, the picture is almost certainly identical with one listed as item 66 in the posthumous inventory (1650) of Particelli, Superintendent of Finance under Louis XIV of France: "Item une autre tableau du Tissien representant une dame venitienne plus qu'à demy corps tenant une grenade" (Another picture by Titian, representing a

KRESS COLLECTION DIGITAL ARCHIVE

Venetian woman holding a pomegranate, longer than half-length). When it was inherited soon afterwards by La Vrillière, it was described as "portrait d'une femme tenant une pomme en ses mains ayant une guirlande de fleurs su sa tête" (portrait of a woman holding an apple in her hands, and with a garland of flowers on her head). See Mickaël Szanto, "Venise, Reni et la romanité. La collection de tableaux de Michel Particelli d'Hémery (1650)," in *Venise & Paris 1500–1700: La peinture vénitienne de la Renaissance et sa réception en France*, ed. Michel Hochmann, Geneva, 2011: 224, 259, 274. [2] The painting was lent by G. Wilbraham to an exhibition at the British Institution in 1829. [3] The painting was lent by G.F. Wilbraham to an exhibition at the Royal Academy in 1883. [4] The painting was lent by H.E. Wilbraham to an exhibition at the Burlington Fine Arts Club in 1914. [5] The painting was seen at Wilbraham's by Duveen agents in 1927, per the Duveen "Scout book," but at that time Wilbraham indicated he was not interested in selling his pictures. He had changed his mind by October 1928, and received the court order necessary to make the sale on 14 January 1929 (Duveen Brothers Records, accession number 960015, Research Library, Getty Research Institute, Los Angeles: Series I.D, General business records, reel 71, box 201: Scouts' books, folder 1: England, "Things seen"; Series II.A, Files regarding works of art, reel 150, box 295: Titian, folder 18: Titian, "Portrait of a Lady," ex H.E. Wilbraham; Series II.A, Files regarding works of art, reel 158, box 303: Weyden, van der - Zurbaran, folder 7: Wilbraham Collection; copies in NGA curatorial files). [6] Duveen Brothers Records, accession number 960015, Research Library, Getty Research Institute, Los Angeles: Series I.D, General business records, reel 54, box 151: House invoices, 1935-1944; copy in NGA curatorial file.

ACCESSION NUMBER

1939.1.292

KRESS NUMBER

512

LEGACY NGA NUMBER

403

1 ACQUISITION

Duveen Brothers, 1938

1 DISTRIBUTION

Gift to National Gallery of Art, June 29, 1939

EXTERNAL LINKS

Related Collection Record

<https://www.nga.gov/collection/art-object-page.435.html>

Related National Gallery of Art Library Image Collections Record

https://library.nga.gov/permalink/01NGA_INST/1p5jkvq/alma991595843804896

Related National Gallery of Art Systematic Catalog

<https://www.nga.gov/research/online-editions/italian-paintings-of-the-sixteenth-century.html>

13 ARCHIVAL ITEMS



K0512 - Expert opinion by Berenson, circa 1920s-1950s

KRESS COLLECTION DIGITAL ARCHIVE



K0512 - Expert opinion by Longhi, circa 1920s-1950s



K0512 - Expert opinion by Perkins, circa 1920s-1940s



K0512 - Expert opinion by A. Venturi, circa 1920s-1930s



K0512 - Art object record, circa 1930s-1950s



K0512 - Expert opinion by Fiocco, 1939

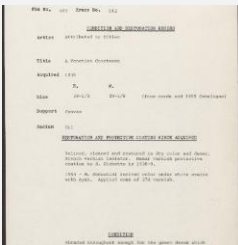
KRESS COLLECTION DIGITAL ARCHIVE



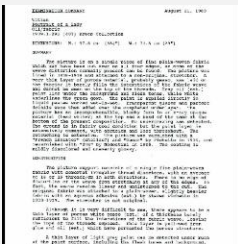
K0512 - Expert opinion by Suida, 1939



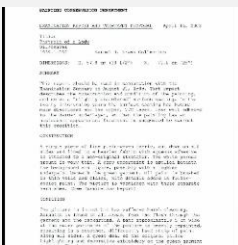
K0512 - Work summary log, 1942-1948



K0512 - Condition and restoration record, circa 1950s-1960s



K0512 - Examination summary, 1989



K0512 - Examination summary and treatment proposal, 2009

KRESS COLLECTION DIGITAL ARCHIVE

ARTIST'S CONCEPTIONS SUMMARY
K0512 - Examination summary, 2014

DATE:
2014-01-10
10:00 AM

NAME: Kress, Charles
K0512 - Examination summary, 2014

DESCRIPTION: Examination summary, 2014

STATUS:
The artist's conception is a drawing of a figure, possibly a deity or a person of high status, standing and holding a staff or scepter. The figure is depicted in a three-quarter view, facing right. The drawing is executed in black ink on a light-colored background. The figure's head is adorned with a tall, ornate headdress or crown. The body is draped in a long, flowing garment. The figure's right hand is raised, holding a staff or scepter. The drawing is framed by a simple rectangular border.

K0512 - Examination summary, 2014

ARTIST'S CONCEPTIONS SUMMARY
K0512 - Examination summary, 2015

DATE:
2015-01-10
10:00 AM

NAME: Kress, Charles
K0512 - Examination summary, 2015

DESCRIPTION: Examination summary, 2015

STATUS:
The artist's conception is a drawing of a figure, possibly a deity or a person of high status, standing and holding a staff or scepter. The figure is depicted in a three-quarter view, facing right. The drawing is executed in black ink on a light-colored background. The figure's head is adorned with a tall, ornate headdress or crown. The body is draped in a long, flowing garment. The figure's right hand is raised, holding a staff or scepter. The drawing is framed by a simple rectangular border.

K0512 - Examination summary, 2015

RECORD LINK

<https://kress.nga.gov/Detail/objects/1673>