

Attributed to Giuseppe Caletti
Portrait of a Man as Saint George



KRESS CATALOGUE NUMBER

K210

IDENTIFIER

1706

ARTIST

Caletti, Giuseppe, active c. 1620/1660

NATIONALITY

Italian

DATE

c. 1620s

MEDIUM

oil on canvas

TYPE OF OBJECT

Painting

DIMENSIONS

83.8 x 71.1 cm (33 x 28 in)

LOCATION

National Gallery of Art, Washington, District of Columbia

HISTORICAL ATTRIBUTION

Tintoretto, Jacopo, 1518/1519-1594

Mor, Antonis, 1519-1576

PROVENANCE

(Count Alessandro Contini-Bonacossi, Rome); [1] sold March 1932 to the Samuel H. Kress Foundation, New York; [2] gift 1937 to NGA.

[1] The first reference to the painting, in a letter by Roberto Longhi of 1929, a copy of which is in NGA curatorial files, does not

KRESS COLLECTION DIGITAL ARCHIVE

mention the painting's location, although Longhi's opinion may have been solicited by Contini-Bonacossi.

[2] The bill of sale that includes the painting, which is listed as *Portrait of a Man with Flag* by Jacopo Tintoretto, is dated 4 March 1932; copy in NGA curatorial files. A handwritten annotation reads "on records as: Dosso Dossi or Jacopo Tintoretto or Francisco Mazzola."

ACCESSION NUMBER

1939.1.98

KRESS NUMBER

210

PICHETTO NUMBER

7715

LEGACY NGA NUMBER

209

2 ACQUISITIONS

Contini Bonacossi, Alessandro, March 4, 1932 [2]

Contini Bonacossi, Alessandro, July 29, 1932

1 DISTRIBUTION

Gift to National Gallery of Art, June 29, 1939

EXTERNAL LINKS

Related Collection Record

<https://www.nga.gov/collection/art-object-page.239.html>

Related National Gallery of Art Library Image Collections Record

https://library.nga.gov/permalink/01NGA_INST/1p5jkvq/alma991240243804896

Related National Gallery of Art Systematic Catalog

<https://www.nga.gov/research/online-editions/italian-paintings-of-the-sixteenth-century.html>

12 ARCHIVAL ITEMS



K0210 - Expert opinion by Berenson, circa 1920s-1950s

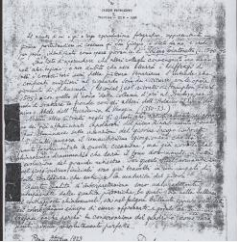


K0210 - Expert opinion by Marle, circa 1920s-1930s

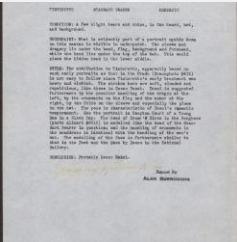
KRESS COLLECTION DIGITAL ARCHIVE



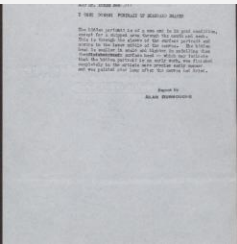
K0210 - Expert opinion by Perkins et al., circa 1920s-1940s



K0210 - Expert opinion by Longhi, 1929



K0210 - Alan Burroughs report, circa 1930s-1940s



K0210 - Alan Burroughs report, circa 1930s-1940s



K0210 - Expert opinion by Fiocco, circa 1930s-1940s

KRESS COLLECTION DIGITAL ARCHIVE



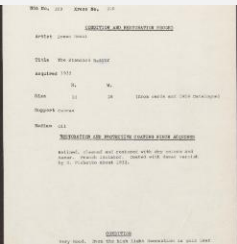
K0210 - Art object record, circa 1930s-1950s



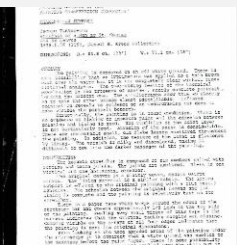
K0210 - Expert opinion by Suida, 1935



K0210 - Work summary log, 1941-1970



K0210 - Condition and restoration record, circa 1950s-1960s



K0210 - Examination summary, 1987

RECORD LINK

<https://kress.nga.gov/Detail/objects/1706>