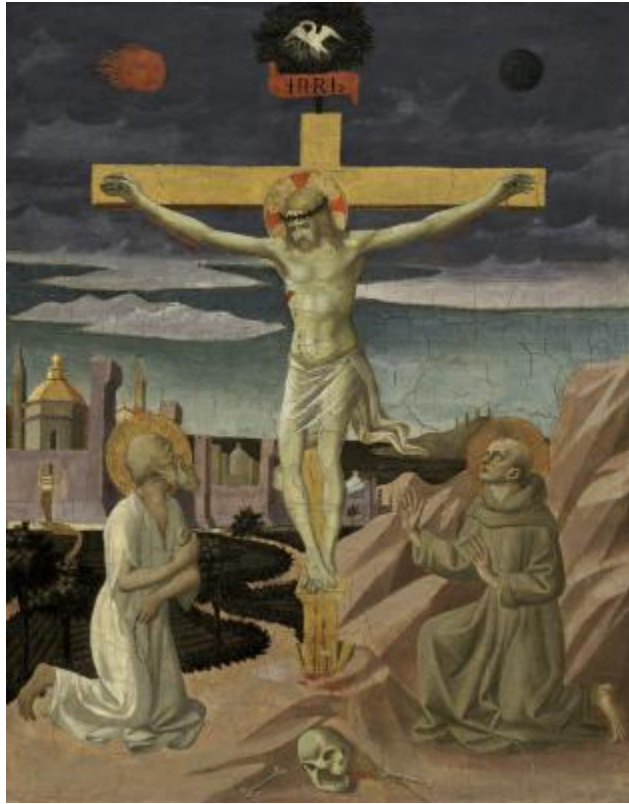


Pesellino, c. 1422-1457
The Crucifixion with Saint Jerome and Saint Francis



KRESS CATALOGUE NUMBER

K230

IDENTIFIER

2127

ARTIST

Pesellino, c. 1422-1457

NATIONALITY

Italian

DATE

c. 1445/1450

MEDIUM

tempera on poplar panel

TYPE OF OBJECT

Painting

DIMENSIONS

61.5 x 49.1 cm (24 3/16 x 19 5/16 in)

LOCATION

National Gallery of Art, Washington, District of Columbia

PROVENANCE

Melzi collection, Milan. [1] (Robert Langton Douglas [1864-1951], London and Dublin); [2] sold to (Count Alessandro Contini-Bonacossi, Rome); sold July 1932 to the Samuel H. Kress Foundation, New York; [3] gift 1939 to NGA. [1] The NGA *Preliminary Catalogue of Paintings and Sculpture*, Washington, D.C., 1941, mentions the Melzi collection, Milan, which is the provenance information given in the bill of sale to the Kress Foundation. Fern Rusk Shapley, in *Paintings from the Samuel H. Kress Collection: Italian Schools, XIII-XV Century*, London, 1966: 110, and *Catalogue of the Italian Paintings*, 2 vols., Washington, D.C., 1979: 1:364, refers to it as the collection of the Duchessa Melzi d'Eril in Milan, whose famous collection is known to have contained mostly Lombard paintings and only one Tuscan work, a tondo attributed to Ghirlandaio (see Guido Carotti, *Capi d'arte appartenenti a S.E. la Duchessa Josephine Melzi d'Eril Barbo*, Bergamo, 1901: 32, and Giulio Melzi d'Eril, *La Galleria Melzi e il collezionismo milanese del tardo Settecento*, Milan, 1973). There did exist in Milan, however, another collection with the same name, albeit less well-

KRESS COLLECTION DIGITAL ARCHIVE

known--that of the lawyer Gennaro Melzi, who began to collect in the early years of this century; a part of this collection was placed at auction in 1928 (see *La raccolta Melzi*, Galleria Pesaro, Milan, 19-23 March 1928). The sale catalogue does not list the Gallery's painting, which could have been purchased privately either before or after the auction. [2] See the letter of 1 May 1941 from Douglas to Edward Fowles of Duveen Brothers, in which Douglas writes: "I sold this picture to Count Contini." (Duveen Brothers Records, accession number 960015, Research Library, Getty Research Institute, Los Angeles: Series II.I, Collectors' files, reel 299, box 244, folder 3, copy in NGA curatorial files.) [3] The bill of sale for a polychrome wooden statue, two vases, a green velvet cope, a book of Piazzetta drawings, and ten paintings, including the Pesellino, which is titled *Crucifixion and Two Saints*, is dated 29 July 1932 (copy in NGA curatorial files).

ACCESSION NUMBER

1939.1.109

KRESS NUMBER

230

PICHETTO NUMBER

7828

LEGACY NGA NUMBER

220

2 ACQUISITIONS

Contini Bonacossi, Alessandro, July 29, 1932

Contini Bonacossi, Alessandro, June 30, 1933

1 DISTRIBUTION

Gift to National Gallery of Art, June 29, 1939

EXTERNAL LINKS

Related Collection Record

<https://www.nga.gov/collection/art-object-page.250.html>

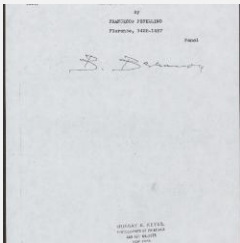
Related National Gallery of Art Library Image Collections Record

https://library.nga.gov/permalink/01NGA_INST/1p5jkvq/alma991087453804896

Related National Gallery of Art Systematic Catalog

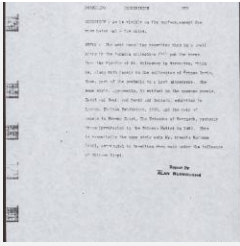
https://library.nga.gov/permalink/01NGA_INST/1cl1g8d/alma992014793504896

11 ARCHIVAL ITEMS

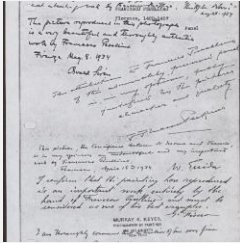


K0230 - Expert opinion by Berenson, circa 1920s-1950s

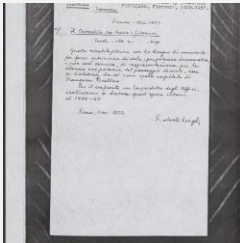
KRESS COLLECTION DIGITAL ARCHIVE



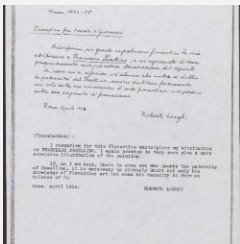
K0230 - Alan Burroughs report, circa 1930s-1940s



K0230 - Expert opinion by A. Venturi et al., 1934



K0230 - Expert opinion by Longhi, 1932



K0230 - Expert opinion by Longhi, 1934

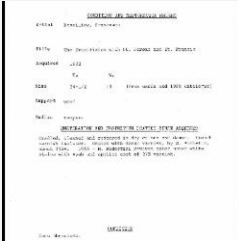


K0230 - Alan Burroughs report, circa 1930s-1940s

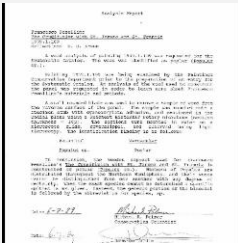
KRESS COLLECTION DIGITAL ARCHIVE



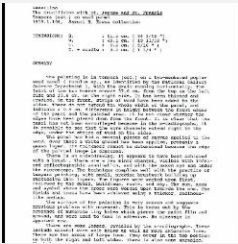
K0230 - Work summary log, 1943-1948



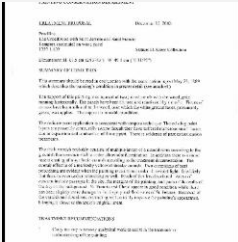
K0230 - Condition and restoration record, circa 1950s-1960s



K0230 - Scientific analysis report, 1989



K0230 - Examination summary, 1989



K0230 - Treatment proposal, 2000

RECORD LINK

<https://kress.nga.gov/Detail/objects/2127>