

Andrea di Bartolo, active from 1389-died 1428

*The Crucifixion, with the Virgin, Mary Magdalene and Saint John the Evangelist*



**KRESS CATALOGUE NUMBER**

K1014

**IDENTIFIER**

2523

**ARTIST**

Andrea di Bartolo, active from 1389-died 1428

**NATIONALITY**

Italian

**DATE**

1400

**MEDIUM**

tempera on panel

**TYPE OF OBJECT**

Painting

**DIMENSIONS**

42.1 x 38.9 cm (16-9/16 x 15-5/16 in)

**LOCATION**

Vanderbilt University Fine Arts Gallery, Nashville, Tennessee

**HISTORICAL ATTRIBUTION**

Vanni, Lippo, active 1344-1376

**PROVENANCE**

(Count Alessandro Contini Bonacossi [1878-1955], Rome-Florence); sold to Samuel H.Kress [1863-1955] on 1 June 1936; gift to George Peabody College for Teachers, now Vanderbilt University Fine Arts Gallery, in 1961, no. 1979.0649P

**ACCESSION NUMBER**

# KRESS COLLECTION DIGITAL ARCHIVE

1979.0649P

## KRESS NUMBER

1014

## PICHETTO NUMBER

8973

## LEGACY NGA NUMBER

878

---

### 1 ACQUISITION

Contini Bonacossi, Alessandro, June 1, 1936 [2]

---

### 2 DISTRIBUTIONS

Loan to National Gallery of Art, January 23, 1946

Gift to Vanderbilt University Fine Arts Gallery, December 09, 1961

---

### EXTERNAL LINKS

#### Related Collection Record

<https://wp0.vanderbilt.edu/gallery/art/collections/the-samuel-h-kress-collection/>

#### Related National Gallery of Art Library Image Collections Record

[https://library.nga.gov/permalink/01NGA\\_INST/1p5jkvq/alma99389173804896](https://library.nga.gov/permalink/01NGA_INST/1p5jkvq/alma99389173804896)

---

### 12 ARCHIVAL ITEMS

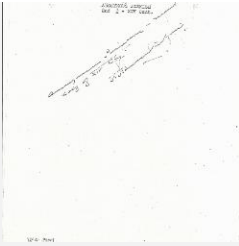


K1014 - Expert opinion by Berenson, circa 1920s-1950s

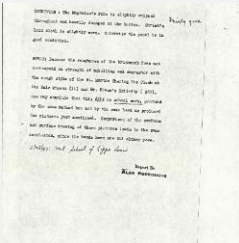


K1014 - Expert opinion by Marle, circa 1920s-1930s

# KRESS COLLECTION DIGITAL ARCHIVE



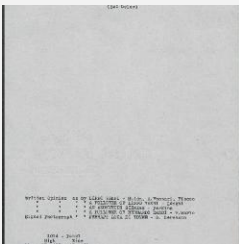
K1014 - Expert opinion by Perkins, circa 1920s-1940s



K1014 - Alan Burroughs report, circa 1930s-1940s



K1014 - Expert opinion by Fiocco, circa 1930s-1940s



K1014 - Art object record, circa 1930s-1950s



K1014 - Photograph, circa 1930s-1960s

# KRESS COLLECTION DIGITAL ARCHIVE



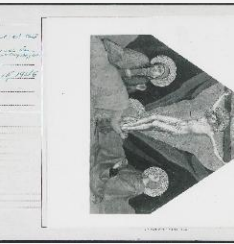
K1014 - Expert opinion by Longhi, 1936



K1014 - Expert opinion by Suida, 1936



K1014 - Expert opinion by A. Venturi, 1936



K1014 - National Gallery of Art mounted photograph, circa 1940s-1950s



K1014 - Condition and restoration record, circa 1950s-1960s

## RECORD LINK

<https://kress.nga.gov/Detail/objects/2523>