

**Florentine 15th Century,  
*Story of Cimone and Ephigenia***



**KRESS CATALOGUE NUMBER**

K103

**IDENTIFIER**

2538

**ARTIST**

Florentine 15th Century

**NATIONALITY**

Italian

**DATE**

c. 1460

**MEDIUM**

tempera on panel

**TYPE OF OBJECT**

Painting

**DIMENSIONS**

40.6 x 137.2 cm (16 x 54 in)

**LOCATION**

Allentown Art Museum, Allentown, Pennsylvania

**PROVENANCE**

(Count Alessandro Contini Bonacossi [1878-1955], Rome and Florence); sold to Samuel H. Kress [1863-1955] on 16 July 1930; gift to the Allentown Art Museum in 1960, no. 1960.09.

**ACCESSION NUMBER**

1960.009.000

**KRESS NUMBER**

103

**PICHETTO NUMBER**

7528

---

**2 ACQUISITIONS**

Contini Bonacossi, Alessandro, July 16, 1930

Contini Bonacossi, Alessandro, June 13, 1932

---

**1 DISTRIBUTION**

Gift to Allentown Art Museum, May 31, 1946

---

**EXTERNAL LINKS**

# KRESS COLLECTION DIGITAL ARCHIVE

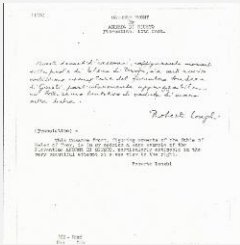
## Related National Gallery of Art Library Image Collections Record

[https://library.nga.gov/permalink/01NGA\\_INST/1p5jvkq/alma991090373804896](https://library.nga.gov/permalink/01NGA_INST/1p5jvkq/alma991090373804896)

### 9 ARCHIVAL ITEMS



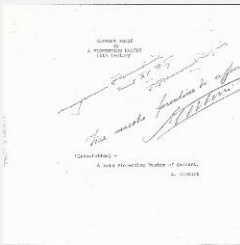
K0103 - Expert opinion by Berenson, circa 1920s-1950s



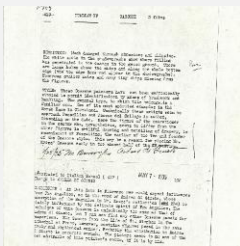
K0103 - Expert opinion by Longhi, circa 1920s-1950s



K0103 - Expert opinion by Marle, circa 1920s-1930s

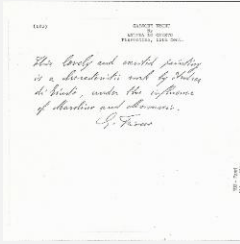


K0103 - Expert opinion by Perkins et al., circa 1920s-1940s



K0103 - Alan Burroughs report, circa 1930s-1940s

# KRESS COLLECTION DIGITAL ARCHIVE



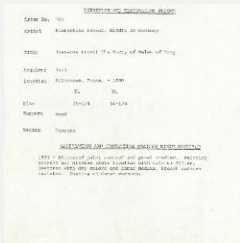
K0103 - Expert opinion by Fiocco, circa 1930s-1940s



K0103 - Photograph, circa 1930s-1960s



K0103 - Expert opinion by Suida, 1936



K0103 - Condition and restoration record, circa 1950s-1960s

## RECORD LINK

<https://kress.nga.gov/Detail/objects/2538>