

Unknown
Man Holding Gloves



KRESS CATALOGUE NUMBER

K1050

IDENTIFIER

2555

ARTIST

Italian 16th Century
Anonymous Artist

NATIONALITY

Italian

DATE

about 1530

MEDIUM

oil on canvas

TYPE OF OBJECT

Painting

DIMENSIONS

88 x 73.4 cm (34-5/8 x 28-7/8 in)

LOCATION

Birmingham Museum of Art, Birmingham, Alabama

HISTORICAL ATTRIBUTION

Giulio Campi, c. 1502-1572

PROVENANCE

Sir Robert Abdy, Newton Ferrers, Callington, Cornwall; (sale, Sotheby's, London, 28 May 1936, no. 82 as Lorenzo Lotto); Eugenio Ventura, Florence. (Thomas Agnew & Son, London). (Count Alessandro Contini Bonacossi [1878-1955], Rome-Florence); sold to

KRESS COLLECTION DIGITAL ARCHIVE

Samuel H. Kress [1863-1955] on 18 October 1936, as Giulio Campi; gift to the Birmingham Museum of Art in 1961, no. 1961.105.

ACCESSION NUMBER

1961.105

KRESS NUMBER

1050

PICHETTO NUMBER

9102

LEGACY NGA NUMBER

839

1 ACQUISITION

Contini Bonacossi, Alessandro, October 18, 1936 [2]

2 DISTRIBUTIONS

Loan to National Gallery of Art, January 23, 1946

Gift to Birmingham Museum of Art, December 09, 1961

EXTERNAL LINKS

Related Collection Record

<https://artsbma.org/collection/man-holding-gloves/>

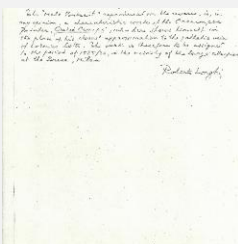
Related National Gallery of Art Library Image Collections Record

https://library.nga.gov/permalink/01NGA_INST/1p5jkvq/alma99393993804896

10 ARCHIVAL ITEMS



K1050 - Expert opinion by Berenson, circa 1920s-1950s

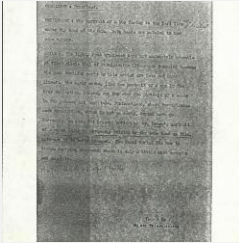


K1050 - Expert opinion by Longhi, circa 1920s-1950s

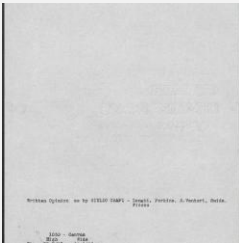
KRESS COLLECTION DIGITAL ARCHIVE



K1050 - Expert opinion by Perkins, circa 1920s-1940s



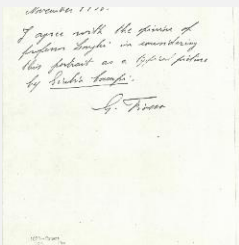
K1050 - Alan Burroughs report, circa 1930s-1940s



K1050 - Art object record, circa 1930s-1950s

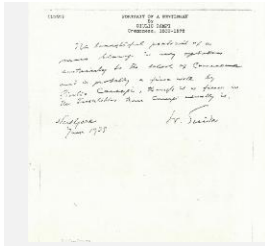


K1050 - Photograph, circa 1930s-1960s

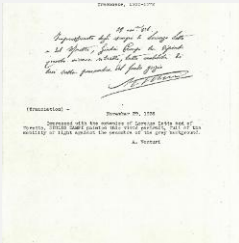


K1050 - Expert opinion by Fiocco, 1936

KRESS COLLECTION DIGITAL ARCHIVE



K1050 - Expert opinion by Suida, 1939



K1050 - Expert opinion by A. Venturi, 1936



K1050 - Condition and restoration record, circa 1950s-1960s

RECORD LINK

<https://kress.nga.gov/Detail/objects/2555>