

**Cornelius de Vos, probably 1584-1651**  
***Portrait of a Lady with Her Daughter***



**KRESS CATALOGUE NUMBER**

K1065

**IDENTIFIER**

2571

**ARTIST**

Vos, Cornelius de, probably 1584-1651

**NATIONALITY**

Flemish

**DATE**

c. 1620

**MEDIUM**

oil on panel

**TYPE OF OBJECT**

Painting

**DIMENSIONS**

110.5 x 86 cm (43-1/2 x 33-7/8 in)

**LOCATION**

Fine Arts Museums of San Francisco, San Francisco, California

**PROVENANCE**

William Frederick Barton Massey-Mainwaring [1845-1907], London. [1] Sir George Donaldson [1845-1925], London, by 1910. [2] (Sedelmeyer Gallery, Paris), in 1913; [3] (Eugène Fischhof [brother-in-law of Sedelmeyer]); (his sale, Galerie Georges Petit, Paris, 14 June 1913, no. 67). (J. Feral, Paris). [4] (F. Kleinberger Galleries, Paris); acquired 3 November 1923 by (F. Kleinberger Galleries, New York); [5] sold 26 January 1927 to (Count Alessandro Contini Bonacossi [1878-1955] Rome- Florence); sold to Samuel H. Kress [1863-1955] on 4 March 1932; on loan to the Portland Art Museum in 1937; returned to the Kress Foundation in 1952; gift to the Fine Arts Museums of San Francisco in 1961, no. 61.44.34.

[1] Several sales of the Massey-Mainwaring estate were held in London. This picture was not included in the first or second

# KRESS COLLECTION DIGITAL ARCHIVE

- portions that included paintings, (16 March and 13 April 1907) or a 14 June 1907 sale of this and other collections.  
[2] Lent to Exposition d'art ancien : l'art belge au XVIIe siècle, Brussels, 1910, no. 509.  
[3] Exhibited at the Sedelmeyer Gallery, Paris, 12th Series, 100 Paintings by Old Masters, 1913, no. 28  
[4] According to the Fine Arts Museums of San Francisco Curatorial Files.  
[5] Kleinberger Gallery stock card no. 15586, Department of European Paintings, Metropolitan Museum of Art.

## ACCESSION NUMBER

61.44.34

## KRESS NUMBER

1065

## LEGACY KRESS NUMBER

211

## PICHETTO NUMBER

7699

---

## 1 ACQUISITION

Contini Bonacossi, Alessandro, March 4, 1932 [2]

---

## 1 DISTRIBUTION

Gift to Fine Arts Museums of San Francisco, December 09, 1961

---

## EXTERNAL LINKS

### Related Collection Record

<https://art.famsf.org/cornelis-de-vos/portrait-lady-her-daughter-614434>

### Related National Gallery of Art Library Image Collections Record

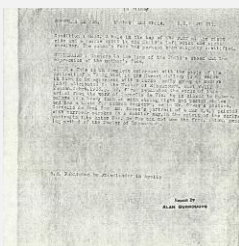
[https://library.nga.gov/permalink/01NGA\\_INST/1p5jkvq/alma991596563804896](https://library.nga.gov/permalink/01NGA_INST/1p5jkvq/alma991596563804896)

---

## 6 ARCHIVAL ITEMS

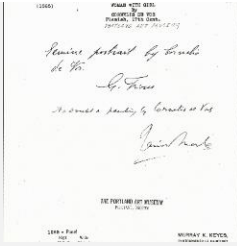


K1065 - Expert opinion by Longhi et al., circa 1920s-1950s



K1065 - Alan Burroughs report, circa 1930s-1940s

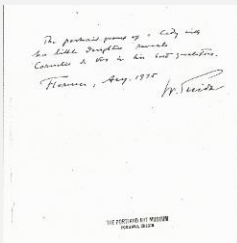
# KRESS COLLECTION DIGITAL ARCHIVE



K1065 - Expert opinion by Fiocco et al., circa 1930s-1940s



K1065 - Photograph, circa 1930s-1960s



K1065 - Expert opinion by Suida, 1935



K1065 - Condition and restoration record, circa 1950s-1960s

## RECORD LINK

<https://kress.nga.gov/Detail/objects/2571>