

Follower of Taddeo di Bartolo
Saint Donatus



KRESS CATALOGUE NUMBER

K1075

IDENTIFIER

2581

ARTIST

Taddeo di Bartolo, c. 1362-c. 1422
Anonymous Artist

NATIONALITY

Italian

DATE

c. 1400

MEDIUM

tempera on panel

TYPE OF OBJECT

Painting

DIMENSIONS

60.3 x 29.9 cm (23-3/4 x 11-3/4 in)

LOCATION

San Antonio Museum of Art, San Antonio, Texas

PROVENANCE

(Count Alessandro Contini Bonacossi [1878-1955] Rome-Florence); sold to Samuel H. Kress [1863-1955] on 10 October 1935 as Sienese Master; gift 1936 to the San Antonio Museum of Art, no. 38.17.69.

ACCESSION NUMBER

38.17.69

KRESS NUMBER

1075

LEGACY KRESS NUMBER

375

PICHETTO NUMBER

8796

1 ACQUISITION

Contini Bonacossi, Alessandro, October 10, 1935 [2]

1 DISTRIBUTION

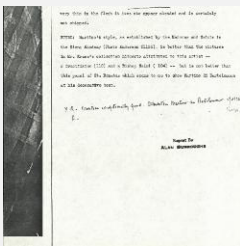
Gift to San Antonio Museum of Art, December 20, 1937

EXTERNAL LINKS

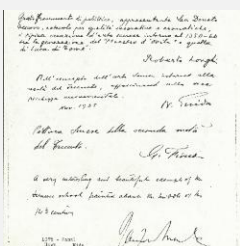
Related National Gallery of Art Library Image Collections Record

https://library.nga.gov/permalink/01NGA_INST/1p5jkvq/alma991090433804896

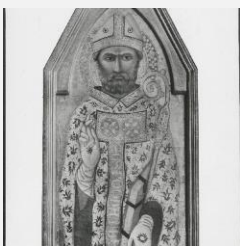
4 ARCHIVAL ITEMS



K1075 - Alan Burroughs report, circa 1930s-1940s

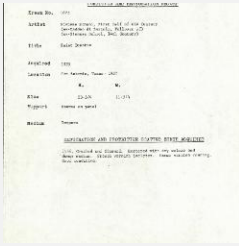


K1075 - Expert opinion by Fiocco et al., circa 1930s-1940s



K1075 - Photograph, circa 1930s-1960s

KRESS COLLECTION DIGITAL ARCHIVE



K1075 - Condition and restoration record, circa 1950s-1960s

RECORD LINK

<https://kress.nga.gov/Detail/objects/2581>