

Master of the Blessed Clare of Rimini, active c. 1340-1345
The Adoration of the Magi



KRESS CATALOGUE NUMBER

K1084

IDENTIFIER

2588

ARTIST

Master of the Blessed Clare of Rimini, active c. 1340-1345

NATIONALITY

Italian

DATE

c. 1340

MEDIUM

tempera on panel

TYPE OF OBJECT

Painting

DIMENSIONS

57.8 x 59.4 cm (22-3/4 x 23-3/8 in)

LOCATION

Low Art Museum, University of Miami, Coral Gables, Florida

HISTORICAL ATTRIBUTION

Baronzio, Giovanni, active c. 1320-1350

PROVENANCE

San Francisco, Rimini. Monastero degli Angeli, Rimini, before 1755 until c. 1810. G. A. Hoskins until 1864; Hoskins family by inheritance; sold through (F.W. Robinson) at (Christie's, London, 15 November 1918, no.112, as Segna di Bonaventura); bought by Bolton. [1] (Robert Langton Douglas [1864-1951], London); sold to Otto H. Kahn [1867-1934], New York; [2](Duveen Brothers, Inc., New York); sold 1937 to Samuel H. Kress [1863-1955]; gift 1939 to the National Gallery of Art as Baronzio da Rimini; deaccessioned in 1960 and returned to the Samuel H. Kress Foundation; gift to Lowe Art Museum, University of Miami, Coral Gables, no. 61.018.000. [1] Robinson and buyer per annotated auctioneer catalogue, Christie's Archive, London. [2] See letter from

KRESS COLLECTION DIGITAL ARCHIVE

Douglas to Fowles dated 1 May 1941, Duveen Brothers Records, Box 244 (reel 299), Getty Research Institute.

ACCESSION NUMBER

61.018.000

KRESS NUMBER

1084

LEGACY NGA NUMBER

452

1 ACQUISITION

Duveen Brothers, April 12, 1937

3 DISTRIBUTIONS

Gift to National Gallery of Art, June 29, 1939

Deaccession by National Gallery of Art, September 14, 1960

Gift to Lowe Art Museum, University of Miami, December 09, 1961

EXTERNAL LINKS

Related Collection Record

<https://emuseum1.as.miami.edu/objects/820>

Related National Gallery of Art Library Image Collections Record

https://library.nga.gov/permalink/01NGA_INST/1p5jkvq/alma991596833804896

11 ARCHIVAL ITEMS



K1084 - Expert opinion by Berenson, circa 1920s-1950s

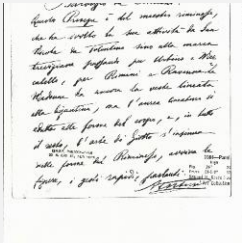


K1084 - Expert opinion by Longhi, circa 1920s-1950s

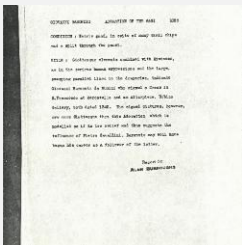
KRESS COLLECTION DIGITAL ARCHIVE



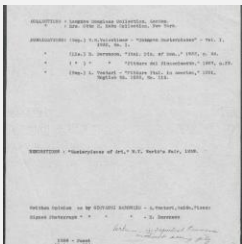
K1084 - Expert opinion by Perkins, circa 1920s-1940s



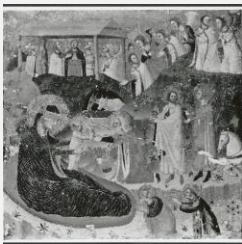
K1084 - Expert opinion by A. Venturi, circa 1920s-1930s



K1084 - Alan Burroughs report, circa 1930s-1940s

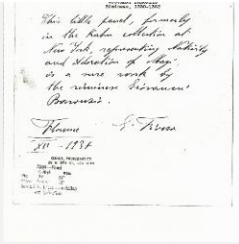


K1084 - Art object record, circa 1930s-1950s



K1084 - Photograph, circa 1930s-1960s

KRESS COLLECTION DIGITAL ARCHIVE



K1084 - Expert opinion by Fiocco, 1938



K1084 - Expert opinion by Suida, 1938



K1084 - National Gallery of Art mounted photograph, circa 1940s-1950s



K1084 - Condition and restoration record, circa 1950s-1960s

RECORD LINK

<https://kress.nga.gov/Detail/objects/2588>