

Girolamo da Santa Croce, 1480-1485, died 1556
The Annunciation



KRESS CATALOGUE NUMBER

K1103

IDENTIFIER

2606

ARTIST

Girolamo da Santa Croce, 1480-1485, died 1556

NATIONALITY

Italian

DATE

c. 1540-50

MEDIUM

oil on panel

TYPE OF OBJECT

Painting

DIMENSIONS

55.6 x 71.1 cm (21-7/8 x 28 in)

LOCATION

Columbia Museum of Art, Columbia, South Carolina

PROVENANCE

Contessa Ferretti, Florence. (Count Alessandro Contini Bonacossi [1878-1955] Rome-Florence); sold to Samuel H. Kress [1863-1955] on 16 June 1937; gift to the National Gallery of Art in 1939; deaccessioned in 1952 and returned to the Samuel H. Kress Foundation; gift to Columbia Museum of Art in 1961, no. CMA 1962.25.

ACCESSION NUMBER

CMA 1962.25

KRESS NUMBER

1103

KRESS COLLECTION DIGITAL ARCHIVE

PICHETTO NUMBER

9396

LEGACY NGA NUMBER

469

1 ACQUISITION

Contini Bonacossi, Alessandro, June 16, 1937

3 DISTRIBUTIONS

Gift to National Gallery of Art, June 29, 1939

Deaccession by National Gallery of Art, February 21, 1952

Gift to Columbia Museum of Art, December 09, 1961

EXTERNAL LINKS

Related National Gallery of Art Library Image Collections Record

https://library.nga.gov/permalink/01NGA_INST/1p5jkvq/alma99394443804896

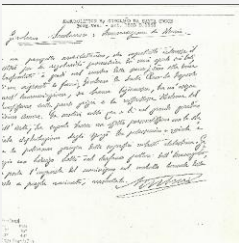
12 ARCHIVAL ITEMS



K1103 - Expert opinion by Berenson, circa 1920s-1950s

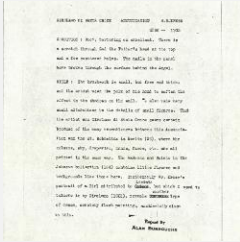


K1103 - Expert opinion by Perkins, circa 1920s-1940s

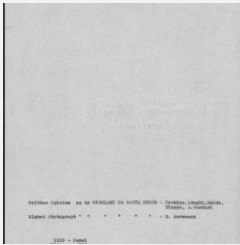


K1103 - Expert opinion by A. Venturi, circa 1920s-1930s

KRESS COLLECTION DIGITAL ARCHIVE



K1103 - Alan Burroughs report, circa 1930s-1940s



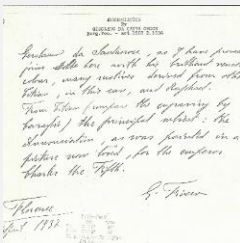
K1103 - Art object record, circa 1930s-1950s



K1103 - Photograph, circa 1930s-1960s

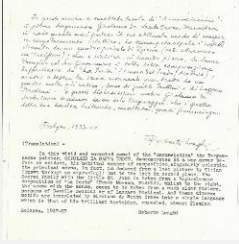


K1103 - Photograph, circa 1930s-1960s

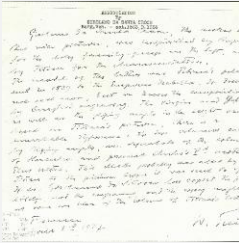


K1103 - Expert opinion by Fiocco, 1937

KRESS COLLECTION DIGITAL ARCHIVE



K1103 - Expert opinion by Longhi, 1937



K1103 - Expert opinion by Suida, 1937



K1103 - National Gallery of Art mounted photograph, circa 1940s-1950s



K1103 - Condition and restoration record, circa 1950s-1960s

RECORD LINK

<https://kress.nga.gov/Detail/objects/2606>