

**Biagio d'Antonio, c. 1446-1516**  
***Archangel Raphael with Tobias***



**KRESS CATALOGUE NUMBER**

K1139

**IDENTIFIER**

2646

**ARTIST**

Biagio d'Antonio, c. 1446-1516

**NATIONALITY**

Italian

**DATE**

1475-80

**MEDIUM**

tempera on panel

**TYPE OF OBJECT**

Painting

**DIMENSIONS**

139.7 x 50.8 cm (50 x 20 in)

**LOCATION**

Museo de Arte de Ponce, Ponce, Puerto Rico

**HISTORICAL ATTRIBUTION**

Uttili, Giovanni Battista, c. 1465-1516

**PROVENANCE**

Marchese Panciatichi, Florence, in 1902. Pietro Foresti, Carpi; (his sale, Lino Pesaro, Palazzo Cova, Milan, 12 May 1913; no. 108 as Andrea del Castagno). (Demotte, Inc. Paris), by 1920. (Count Alessandro Contini Bonacossi [1878-1955] Rome-Florence); sold to Samuel H. Kress [1863-1955] on 16 September 1938 as Giovan Battista Uttili; gift to Museo de Arte de Ponce in 1962, no.

# KRESS COLLECTION DIGITAL ARCHIVE

62.0260

## ACCESSION NUMBER

62.026

## KRESS NUMBER

1139

## PICHETTO NUMBER

9890

---

### 1 ACQUISITION

Contini Bonacossi, Alessandro, September 16, 1938 [1]

---

### EXTERNAL LINKS

#### Related National Gallery of Art Library Image Collections Record

[https://library.nga.gov/permalink/01NGA\\_INST/1p5jkvq/alma99396823804896](https://library.nga.gov/permalink/01NGA_INST/1p5jkvq/alma99396823804896)

---

### 11 ARCHIVAL ITEMS



K1139 - Expert opinion by Berenson, circa 1920s-1950s



K1139 - Expert opinion by Longhi, circa 1920s-1950s

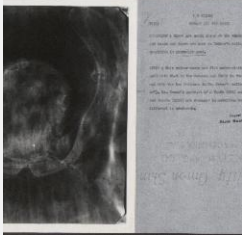


K1139 - Expert opinion by Perkins, circa 1920s-1940s

**KRESS COLLECTION DIGITAL ARCHIVE**



K1139 - Expert opinion by A. Venturi, circa 1920s-1930s



K1139 - Alan Burroughs report, circa 1930s-1940s



K1139 - Art object record, circa 1930s-1950s

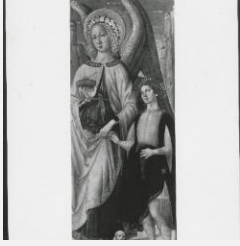


K1139 - Photograph, circa 1930s-1960s

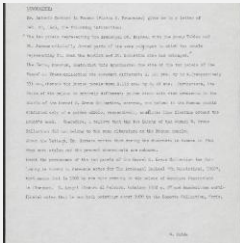


K1139 - Expert opinion by Fiocco, 1938

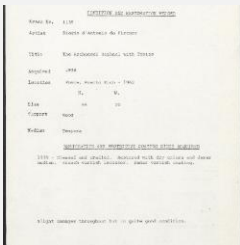
# KRESS COLLECTION DIGITAL ARCHIVE



K1139 - Expert opinion by Suida, 1938



K1139 - Expert opinion by Suida, 1949



K1139 - Condition and restoration record, circa 1950s-1960s

## RECORD LINK

<https://kress.nga.gov/Detail/objects/2646>