

Vittore Crivelli, c. 1444- 1501
Coronation of the Virgin



KRESS CATALOGUE NUMBER

K1140

IDENTIFIER

2648

ARTIST

Crivelli, Vittore, c. 1444- 1501

NATIONALITY

Italian

DATE

late 15th century

MEDIUM

tempera and gilding on panel

TYPE OF OBJECT

Painting

DIMENSIONS

75.1 x 70.7 cm (29-1/2 x 27 in)

LOCATION

Eskenazi Museum of Art, Indiana University, Bloomington, Indiana

PROVENANCE

(Count Alessandro Contini Bonacossi [1878-1955] Rome-Florence); sold to Samuel H. Kress [1863-1955] on 16 September 1938; gift 1961 to Indiana University Art Museum, Bloomington, no. 62.157.

ACCESSION NUMBER

62.157

KRESS NUMBER

1140

1 ACQUISITION

Contini Bonacossi, Alessandro, September 16, 1938 [1]

1 DISTRIBUTION

Gift to Indiana University Art Museum, May 02, 1962

EXTERNAL LINKS

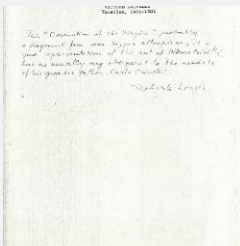
Related National Gallery of Art Library Image Collections Record

https://library.nga.gov/permalink/01NGA_INST/1p5jkvq/alma99396833804896

9 ARCHIVAL ITEMS



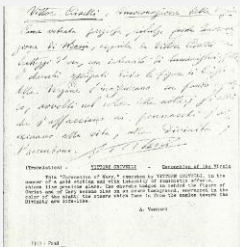
K1140 - Expert opinion by Berenson, circa 1920s-1950s



K1140 - Expert opinion by Longhi, circa 1920s-1950s

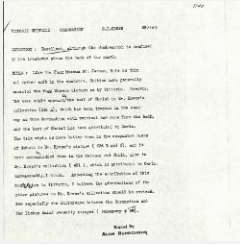


K1140 - Expert opinion by Perkins, circa 1920s-1940s



K1140 - Expert opinion by A. Venturi, circa 1920s-1930s

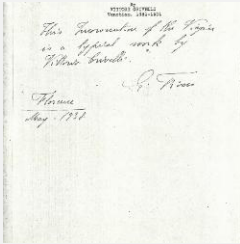
KRESS COLLECTION DIGITAL ARCHIVE



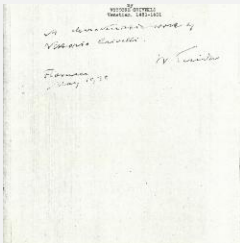
K1140 - Alan Burroughs report, circa 1930s-1940s



K1140 - Photograph, circa 1930s-1960s



K1140 - Expert opinion by Fiocco, 1938



K1140 - Expert opinion by Suida, 1938



K1140 - Condition and restoration record, circa 1950s-1960s

RECORD LINK

<https://kress.nga.gov/Detail/objects/2648>