

Niccolò Giolfino, 1476-1555
The Myth of Deucalion and Pyrrha



KRESS CATALOGUE NUMBER

K1199

IDENTIFIER

2712

ARTIST

Giolfino, Niccolò, 1476-1555

NATIONALITY

Italian

DATE

c. 1550

MEDIUM

tempera on panel

TYPE OF OBJECT

Painting

DIMENSIONS

101 x 144.8 cm (39-3/4 x 57 in)

LOCATION

Eskenazi Museum of Art, Indiana University, Bloomington, Indiana

PROVENANCE

Comm. Michelangelo Guggenheim, Venice by 1906; (his sale, conducted by Galerie Hugo Helbing and held at the Palazzo Balbi, Venice, 30 September 1913, no 883). (Count Alessandro Contini Bonacossi [1878-1955] Rome-Florence); sold to Samuel H. Kress [1863-1955] on 1 September 1939; gift 1961 to Indiana University Art Museum, Bloomington, no. 62.159.

ACCESSION NUMBER

62.159

KRESS NUMBER

1199

LEGACY NGA NUMBER

850

KRESS COLLECTION DIGITAL ARCHIVE

1 ACQUISITION

Contini Bonacossi, Alessandro, September 1, 1939 [1]

2 DISTRIBUTIONS

Loan to National Gallery of Art, January 23, 1946

Gift to Indiana University Art Museum, May 02, 1962

EXTERNAL LINKS

Related National Gallery of Art Library Image Collections Record

https://library.nga.gov/permalink/01NGA_INST/1p5jkvq/alma99401813804896

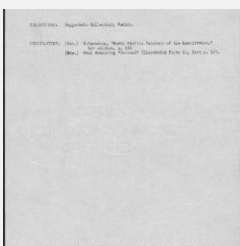
10 ARCHIVAL ITEMS



K1199 - Expert opinion by Perkins, circa 1920s-1940s



K1199 - Expert opinion by A. Venturi, circa 1920s-1930s



K1199 - Art object record, circa 1930s-1950s

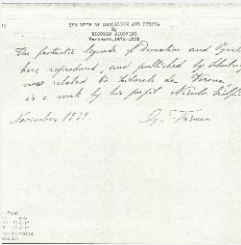


K1199 - Photograph, circa 1930s-1960s

KRESS COLLECTION DIGITAL ARCHIVE



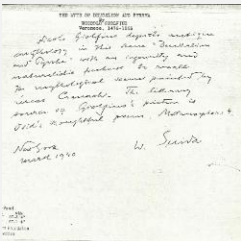
K1199 - Photograph, circa 1930s-1960s



K1199 - Expert opinion by Fiocco, 1939



K1199 - Expert opinion by Longhi, 1939



K1199 - Expert opinion by Suida, 1940



K1199 - National Gallery of Art mounted photograph, circa 1940s-1950s

KRESS COLLECTION DIGITAL ARCHIVE



K1199 - Condition and restoration record, circa 1950s-1960s

RECORD LINK

<https://kress.nga.gov/Detail/objects/2712>