

Attributed to Girolamo da Carpi
Ruggiero Saving Angelica



KRESS CATALOGUE NUMBER

K1202

IDENTIFIER

2717

ARTIST

Girolamo da Carpi, 1501-1556

NATIONALITY

Italian

DATE

c. 1530-56

MEDIUM

tempera on panel

TYPE OF OBJECT

Painting

DIMENSIONS

42.9 x 34.3 cm (16-7/8 x 13-1/2 in)

LOCATION

El Paso Museum of Art, El Paso, Texas

PROVENANCE

(Count Alessandro Contini Bonacossi, [1878-1955], Rome-Florence); sold to Samuel H. Kress [1863-1955] on 1 September 1939 as Girolamo da Carpi ; gift to El Paso Museum of Art in 1961, no. 1961.1.23.

ACCESSION NUMBER

1961.1.23

KRESS NUMBER

1202

LEGACY NGA NUMBER

865

1 ACQUISITION

Contini Bonacossi, Alessandro, September 1, 1939 [1]

2 DISTRIBUTIONS

Loan to National Gallery of Art, January 23, 1946

Gift to El Paso Museum of Art, December 09, 1961

EXTERNAL LINKS

Related National Gallery of Art Library Image Collections Record

https://library.nga.gov/permalink/01NGA_INST/1p5jvkq/alma991095793804896

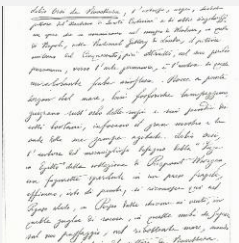
11 ARCHIVAL ITEMS



K1202 - Expert opinion by Berenson, circa 1920s-1950s

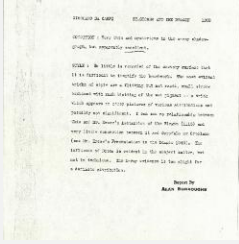


K1202 - Expert opinion by Perkins, circa 1920s-1940s

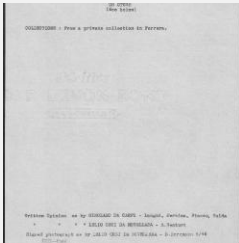


K1202 - Expert opinion by A. Venturi, circa 1920s-1930s

KRESS COLLECTION DIGITAL ARCHIVE



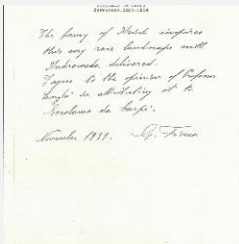
K1202 - Alan Burroughs report, circa 1930s-1940s



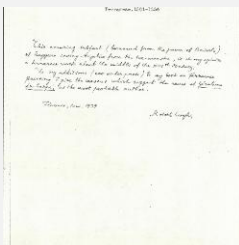
K1202 - Art object record, circa 1930s-1950s



K1202 - Photograph, circa 1930s-1960s

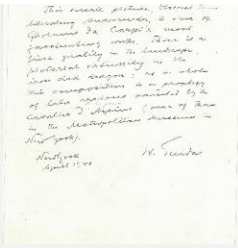


K1202 - Expert opinion by Fiocco, 1939



K1202 - Expert opinion by Longhi, 1939

KRESS COLLECTION DIGITAL ARCHIVE



K1202 - Expert opinion by Suida, 1940



K1202 - National Gallery of Art mounted photograph, circa 1940s-1950s



K1202 - Condition and restoration record, circa 1950s-1960s

RECORD LINK

<https://kress.nga.gov/Detail/objects/2717>