

**Paolo Veneziano or Workshop**  
***Saints Ursula and Christina***



**KRESS CATALOGUE NUMBER**

K1225

**IDENTIFIER**

2741

**ARTIST**

Paolo Veneziano, active 1333-1358  
Anonymous Artist

**NATIONALITY**

Italian

**DATE**

c. 1333-58

**MEDIUM**

tempera and gilding on panel

**TYPE OF OBJECT**

Painting

**DIMENSIONS**

30.5 x 21.6 cm (12 x 8-1/2 in)

**LOCATION**

Eskenazi Museum of Art, Indiana University, Bloomington, Indiana

**PROVENANCE**

Enrico Marinucci, Rome. [1] (Count Alessandro Contini Bonacossi [1878-1955] Rome-Florence); sold to Samuel H. Kress [1863-1955] on 1 September 1939; gift 1961 to Indiana University Art Museum, Bloomington, no. 62.161. [1] Not included in Wilhelm Suida, "Italian Primitives in the Marinucci Collection in Rome," *Apollo* XX (September 1934), p. 122+. Nor does it appear to be included in a letter dated 1 October 1936 from an Enrico Capiello, offering pictures on behalf of Marinucci to the director of the William Rockhill Nelson Gallery (Philbrook Museum of Art, Tulsa, curatorial file for Tanzio da Varallo, 1944.2, copy NGA curatorial

# KRESS COLLECTION DIGITAL ARCHIVE

records). It is likely that those paintings came from the collection of Marinucci's uncle, Cardinal Pietro Gasparri [1852-1934].

## ACCESSION NUMBER

62.161

## KRESS NUMBER

1225

---

## 1 ACQUISITION

Contini Bonacossi, Alessandro, September 1, 1939 [1]

---

## 1 DISTRIBUTION

Gift to Indiana University Art Museum, May 02, 1962

---

## EXTERNAL LINKS

### Related National Gallery of Art Library Image Collections Record

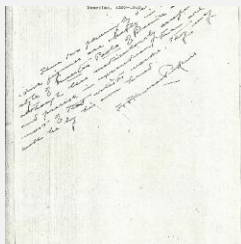
[https://library.nga.gov/permalink/01NGA\\_INST/1p5jvkq/alma99404373804896](https://library.nga.gov/permalink/01NGA_INST/1p5jvkq/alma99404373804896)

---

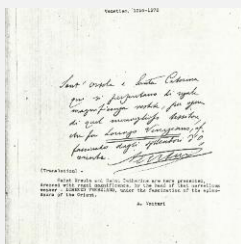
## 10 ARCHIVAL ITEMS



K1225 - Expert opinion by Berenson, circa 1920s-1950s

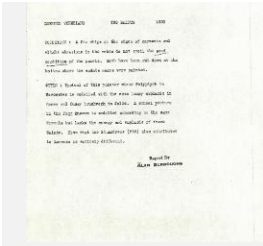


K1225 - Expert opinion by Perkins, circa 1920s-1940s

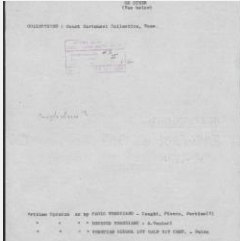


K1225 - Expert opinion by A. Venturi, circa 1920s-1930s

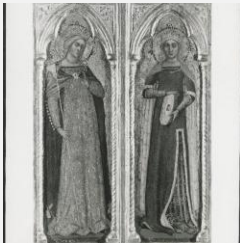
# KRESS COLLECTION DIGITAL ARCHIVE



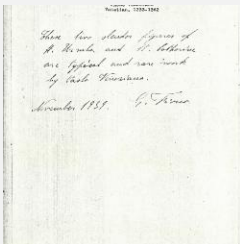
K1225 - Alan Burroughs report, circa 1930s-1940s



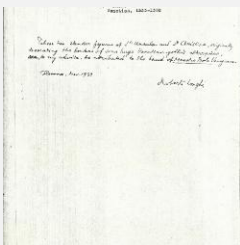
K1225 - Art object record, circa 1930s-1950s



K1225 - Photograph, circa 1930s-1960s

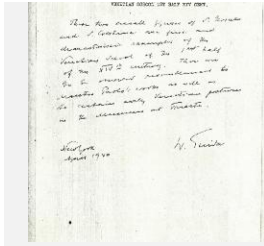


K1225 - Expert opinion by Fiocco, 1939

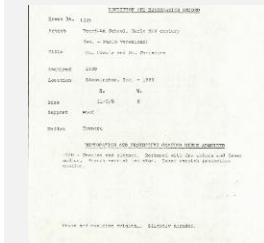


K1225 - Expert opinion by Longhi, 1939

# KRESS COLLECTION DIGITAL ARCHIVE



K1225 - Expert opinion by Suida, 1940



K1225 - Condition and restoration record, circa 1950s-1960s

## RECORD LINK

<https://kress.nga.gov/Detail/objects/2741>