

**Marco Basaiti, active 1496-1530**  
*Portrait of a Man in Armor*



**KRESS CATALOGUE NUMBER**

K126

**IDENTIFIER**

2758

**ARTIST**

Basaiti, Marco, active 1496-1530

**NATIONALITY**

Italian

**DATE**

c. 1515

**MEDIUM**

oil on canvas

**TYPE OF OBJECT**

Painting

**DIMENSIONS**

73.7 x 55.9 cm (29 x 22 in)

**LOCATION**

Harvard Art Museums, Cambridge, Massachusetts

# KRESS COLLECTION DIGITAL ARCHIVE

## PROVENANCE

(Julius Böhler, Munich), by 1901. [1] Graf Preti, Vienna. (William Bell Paterson, London), by 1904. [2] Dr. Paul Mersh [1859-1932], Paris, France; (his sale, Keller and Reiner, Berlin, 1-2 March 1905, no. 66 as Cavazzola). Robert Murat, Paris; (Armstrong et. al. sale, Christie's, London, 14 March 1924, no. 80); Layton. (Trotti et Cie., Paris). (Count Alessandro Contini-Bonacossi [1878-1955], Rome-Florence); sold to Samuel H. Kress [1863-1955] on 30 September 1930; gift to the Fogg Art Museum, Harvard University Art Museums in 1962 n. 1962.159. [1] Exhibited in Renaissance Art, Munich, 1901, no. 35, as Giorgione. [2] Burlington Magazine, vol. v, 1904, p. 574.

## ACCESSION NUMBER

1962.159

## KRESS NUMBER

126

## PICHETTO NUMBER

7226

---

## 3 ACQUISITIONS

Contini Bonacossi, Alessandro, September 30, 1930

Contini Bonacossi, Alessandro, June 13, 1932

Contini Bonacossi, Alessandro, June 27, 1934

---

## 1 DISTRIBUTION

Gift to Harvard Art Museums, September 25, 1963

---

## EXTERNAL LINKS

### Related Collection Record

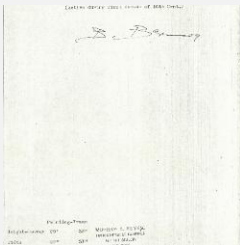
<https://hvard.art/o/228228>

### Related National Gallery of Art Library Image Collections Record

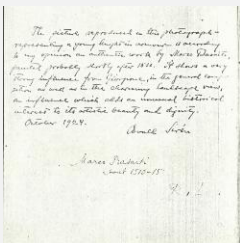
[https://library.nga.gov/permalink/01NGA\\_INST/1p5jkvq/alma991091493804896](https://library.nga.gov/permalink/01NGA_INST/1p5jkvq/alma991091493804896)

---

## 11 ARCHIVAL ITEMS

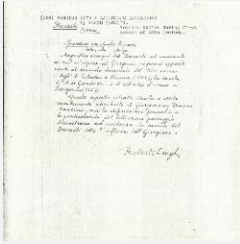


K0126 - Expert opinion by Berenson, circa 1920s-1950s

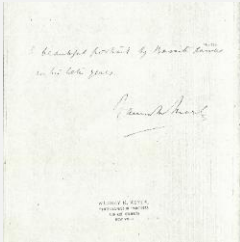


K0126 - Expert opinion by Longhi et al., circa 1920s-1950s

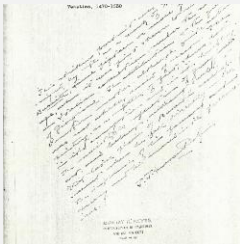
# KRESS COLLECTION DIGITAL ARCHIVE



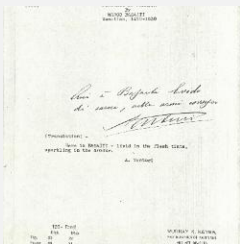
K0126 - Expert opinion by Longhi, circa 1920s-1950s



K0126 - Expert opinion by Marle, circa 1920s-1930s



K0126 - Expert opinion by Perkins, circa 1920s-1940s

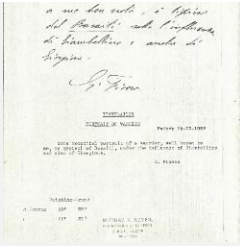


K0126 - Expert opinion by A. Venturi, circa 1920s-1930s



K0126 - Alan Burroughs report, circa 1930s-1940s

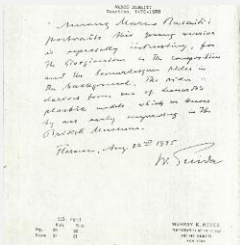
# KRESS COLLECTION DIGITAL ARCHIVE



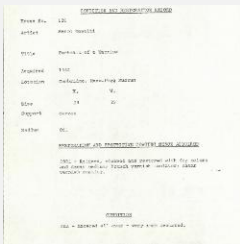
K0126 - Expert opinion by Fiocco, 1933



K0126 - Photograph, circa 1930s-1960s



K0126 - Expert opinion by Suida, 1935



K0126 - Condition and restoration record, circa 1950s-1960s

## RECORD LINK

<https://kress.nga.gov/Detail/objects/2758>