

Circle of Fra Bartolommeo

Virgin and Child with the Infant St. John the Baptist, St. Francis, and Three Angels



KRESS CATALOGUE NUMBER

K148

IDENTIFIER

2843

ARTIST

Bartolommeo, Fra, 1472-1517
Anonymous Artist

NATIONALITY

Italian

DATE

c. 1510

MEDIUM

oil on lindenwood panel

TYPE OF OBJECT

Painting

DIMENSIONS

117.2 x 116.2 cm (46-1/8 x 45-3/4 in)

LOCATION

Columbia Museum of Art, Columbia, South Carolina

HISTORICAL ATTRIBUTION

Bartolommeo, Fra, 1472-1517

PROVENANCE

(Charles Fairfax Murray [1849-1919], London and Florence). [1] Achillito Chiesa, Milan; (his sale, American Art Galleries, New York, 16 April 1926, no. 49); D.W. Walters. (Count Alessandro Contini Bonacossi [1878-1955] Rome-Florence); sold to Samuel H. Kress [1863-1955] on 15 July 1931; gift to the National Gallery of Art in 1939; deaccessioned 1952 and returned to the Samuel H. Kress Foundation; gift to Columbia Museum of Art in 1961, no. CMA 1954.3. [1]The painting was not included in sales from Fairfax

KRESS COLLECTION DIGITAL ARCHIVE

Murray's estate held at Christie's, London, 30 January - 2 February 1920; Sotheby's, London, 10 May 1922. There is no mention of the painting in the Charles Fairfax Murray Papers held at the Rylands Library in Manchester, UK [call number: GB 133 ENG MSS1278-1283]

ACCESSION NUMBER

CMA 1954.3

KRESS NUMBER

148

PICHETTO NUMBER

7527

LEGACY NGA NUMBER

176

1 ACQUISITION

Contini Bonacossi, Alessandro, July 15, 1931

4 DISTRIBUTIONS

Gift to National Gallery of Art, June 29, 1939

Transfer to auxiliary collection by National Gallery of Art, March 31, 1943

Deaccession by National Gallery of Art, October 15, 1952

Gift to Columbia Museum of Art, December 09, 1961

EXTERNAL LINKS

Related National Gallery of Art Library Image Collections Record

https://library.nga.gov/permalink/01NGA_INST/1p5jvkq/alma99153233804896

12 ARCHIVAL ITEMS



K0148 - Expert opinion by Berenson, circa 1920s-1950s



K0148 - Expert opinion by Marle, circa 1920s-1930s

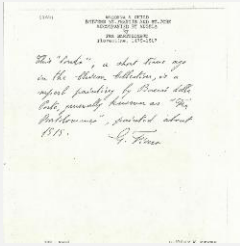
KRESS COLLECTION DIGITAL ARCHIVE



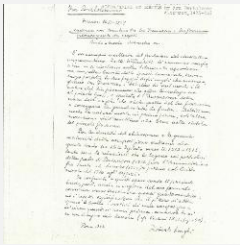
K0148 - Expert opinion by Perkins, circa 1920s-1940s



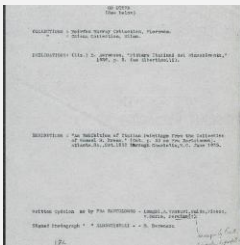
K0148 - Alan Burroughs report, circa 1930s-1940s



K0148 - Expert opinion by Fiocco, circa 1930s-1940s



K0148 - Expert opinion by Longhi, 1932



K0148 - Art object record, circa 1930s-1950s

KRESS COLLECTION DIGITAL ARCHIVE



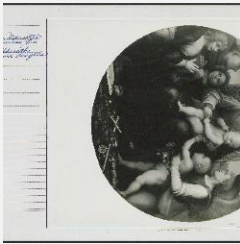
K0148 - Photograph, circa 1930s-1960s



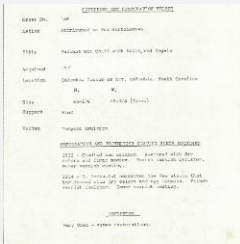
K0148 - Photograph, circa 1930s-1960s



K0148 - Expert opinion by Suida et al., 1935



K0148 - National Gallery of Art mounted photograph, circa 1940s-1950s



K0148 - Condition and restoration record, circa 1950s-1960s

RECORD LINK

<https://kress.nga.gov/Detail/objects/2843>