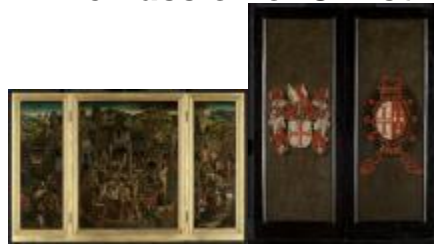


**After Hans Memling  
*The Passion of Christ***



**KRESS CATALOGUE NUMBER**

K1581

**IDENTIFIER**

2889

**ARTIST**

Memling, Hans, active c. 1465-1494  
Anonymous Artist

**NATIONALITY**

Netherlandish

**DATE**

after 1470

**MEDIUM**

oil on pinewood panel

**TYPE OF OBJECT**

Painting

**DIMENSIONS**

80.7 x 127.3 cm (31-3/4 x 50-1/8 in)

**LOCATION**

Williams College Museum of Art, Williamstown, Massachusetts

**PROVENANCE**

Commissioned by 1672 by Peter van Nieuwmunster and his wife, Helena van Crombrugge; their descendants/heirs, still in 1864. Otlet; (sale, Salle Sainte-Gudule, Brussels, 19 December 1902, no. 2, as school of Memling). J. D. Farr; (his sale, Christies, London, 24 January 1903, no. 138); bought by Graham, probably bought in for Farr. Baron Raoul Kuffner de Diószegh [1886-1961]; presumably removed from Castle Diószegh between 1930-1938, and brought to New York; [1] (Paul Drey Gallery, New York); sold 1948 to the Samuel H. Kress Foundation; gift 1953 to University of Arizona Museum of Art, Tucson; returned to Kress in 1957; gift to Williams College Museum of Art in 1960, n. 60.14. [1] The removal of the painting collection from Diószegh Castle between 1930-1938 is mentioned in the "Prefatory Note," to the Parke-Bernet Galleries sales catalogue of Dutch and Flemish Old Masters and Italian Renaissance Paintings from the Diószegh collection held in New York, 18 November 1949.

**ACCESSION NUMBER**

60.14

**KRESS NUMBER**

1581

**PICHETTO NUMBER**

48243

---

**1 ACQUISITION**

Paul Drey Gallery, 1948

---

**1 DISTRIBUTION**

# KRESS COLLECTION DIGITAL ARCHIVE

Gift to Williams College Museum of Art, December 09, 1961

---

## EXTERNAL LINKS

### Related Collection Record

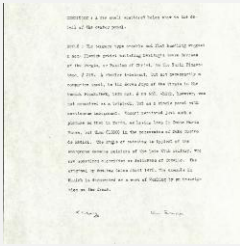
<http://egallery.williams.edu/objects/2238>

### Related National Gallery of Art Library Image Collections Record

[https://library.nga.gov/permalink/01NGA\\_INST/1p5jvkq/alma991591343804896](https://library.nga.gov/permalink/01NGA_INST/1p5jvkq/alma991591343804896)

---

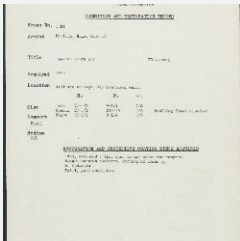
## 3 ARCHIVAL ITEMS



K1581 - Alan Burroughs report, circa 1930s-1940s



K1581 - Photograph, circa 1930s-1960s



K1581 - Condition and restoration record, circa 1950s-1960s

---

## RECORD LINK

<https://kress.nga.gov/Detail/objects/2889>