

Niccolò di Pietro Gerini, died c. 1415-1416
The Four Crowned Martyrs [before Diocletian?]



KRESS CATALOGUE NUMBER

K17

IDENTIFIER

2965

ARTIST

Niccolò di Pietro Gerini, died c. 1415-1416

NATIONALITY

Italian

DATE

about 1390

MEDIUM

tempera on panel

TYPE OF OBJECT

Painting

DIMENSIONS

62.4 x 45.7 cm (24-1/2 x 17-3/4 in)

LOCATION

Denver Art Museum, Denver, Colorado

HISTORICAL ATTRIBUTION

Spinello Aretino, c. 1346-1410/1411

KRESS COLLECTION DIGITAL ARCHIVE

PROVENANCE

(Count Alessandro Contini Bonacossi [1878-1955] Rome-Florence); sold to Samuel H. Kress [1863-1955] on 2 October 1928 as Spinello Aretino; gift to the National Gallery of Art in 1939 as Niccolo di Pietro Gerini; deaccessioned in 1952 and returned to the Samuel H. Kress Foundation; gift to Denver Art Museum in 1954, no. 1961.156.

ACCESSION NUMBER

1961.156

KRESS NUMBER

17

LEGACY NGA NUMBER

127

1 ACQUISITION

Contini Bonacossi, Alessandro, October 2, 1928

3 DISTRIBUTIONS

Gift to National Gallery of Art, June 29, 1939

Deaccession by National Gallery of Art, October 15, 1952

Gift to Denver Art Museum, December 09, 1961

EXTERNAL LINKS

Related Collection Record

<https://denverartmuseum.org/object/1961.156>

Related National Gallery of Art Library Image Collections Record

https://library.nga.gov/permalink/01NGA_INST/1p5jkvq/alma991095773804896

12 ARCHIVAL ITEMS



K0017 - Expert opinion by Berenson, circa 1920s-1950s



K0017 - Expert opinion by Perkins, circa 1920s-1940s

KRESS COLLECTION DIGITAL ARCHIVE



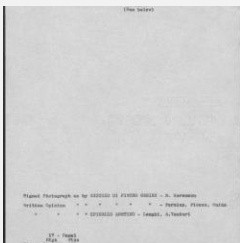
K0017 - Alan Burroughs report, circa 1930s-1940s



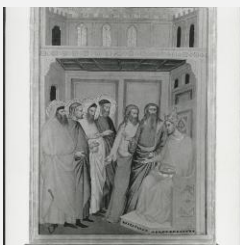
K0017 - Expert opinion by Fiocco, 1933



K0017 - Expert opinion by Longhi, 1930

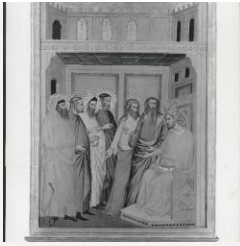


K0017 - Art object record, circa 1930s-1950s



K0017 - Photograph, circa 1930s-1960s

KRESS COLLECTION DIGITAL ARCHIVE



K0017 - Photograph, circa 1930s-1960s



K0017 - Expert opinion by Suida, 1936



K0017 - Expert opinion by A. Venturi, 1936



K0017 - National Gallery of Art mounted photograph, circa 1940s-1950s



K0017 - Condition and restoration record, circa 1950s-1960s

RECORD LINK

<https://kress.nga.gov/Detail/objects/2965>