

Canaletto, 1697-1768
View of the Molo, Venice



KRESS CATALOGUE NUMBER

K252

IDENTIFIER

3371

ARTIST

Canaletto, 1697-1768

NATIONALITY

Italian

DATE

1730

MEDIUM

oil on canvas

TYPE OF OBJECT

Painting

DIMENSIONS

67.3 x 83.2 cm (26-1/2 x 32-3/4 in)

LOCATION

Columbia Museum of Art, Columbia, South Carolina

PROVENANCE

Gurr Johns & Co., Ltd.. London; (sold, Christie's, London, 12 June 1931, no. 59). (Count Alessandro Contini Bonacossi [1878-1955] Rome-Florence); sold to Samuel H. Kress [1863-1955] on 23 June 1933; gift 1939 to the National Gallery of Art; deaccessioned 1952 and returned to the Samuel H. Kress Foundation; gift to Columbia Museum of Art in 1961, no. CMA 1954.44

ACCESSION NUMBER

CMA 1954.44

KRESS NUMBER

252

LEGACY NGA NUMBER

234

1 ACQUISITION

Contini Bonacossi, Alessandro, June 23, 1933 [1]

3 DISTRIBUTIONS

Gift to National Gallery of Art, June 29, 1939

Deaccession by National Gallery of Art, October 15, 1952

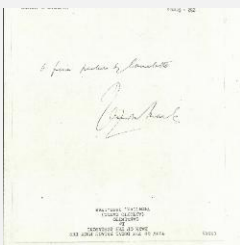
Gift to Columbia Museum of Art, December 09, 1961

EXTERNAL LINKS

Related National Gallery of Art Library Image Collections Record

https://library.nga.gov/permalink/01NGA_INST/1p5jkvq/alma991600033804896

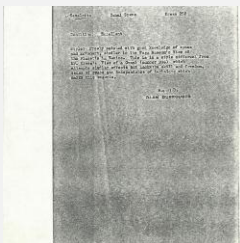
11 ARCHIVAL ITEMS



K0252 - Expert opinion by Marle, circa 1920s-1930s



K0252 - Expert opinion by Perkins et al., circa 1920s-1940s

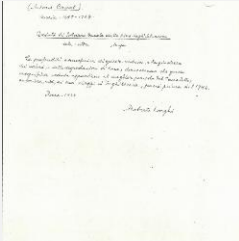


K0252 - Alan Burroughs report, circa 1930s-1940s

KRESS COLLECTION DIGITAL ARCHIVE



K0252 - Expert opinion by Fiocco, circa 1930s-1940s



K0252 - Expert opinion by Longhi, 1933



K0252 - Art object record, circa 1930s-1950s



K0252 - Photograph, circa 1930s-1960s



K0252 - Photograph, circa 1930s-1960s

KRESS COLLECTION DIGITAL ARCHIVE



K0252 - Expert opinion by Suida, 1935



K0252 - National Gallery of Art mounted photograph, circa 1940s-1950s



K0252 - Condition and restoration record, circa 1950s-1960s

RECORD LINK

<https://kress.nga.gov/Detail/objects/3371>