

Marco Basaiti, active 1496-1530
Madonna and Child



KRESS CATALOGUE NUMBER

K323

IDENTIFIER

3423

ARTIST

Basaiti, Marco, active 1496-1530

NATIONALITY

Italian

DATE

c. 1510

MEDIUM

tempera on panel

TYPE OF OBJECT

Painting

DIMENSIONS

62.5 x 49.5 cm (25-1/4 x 20 in)

LOCATION

Georgia Museum of Art, The University of Georgia, Athens, Georgia

PROVENANCE

Manfrin Collection, Venice, by 1871 until at least 1912. [1] (Count Alessandro Contini Bonacossi [1878-1955] Rome-Florence); sold to Samuel H. Kress [1863-1955] on 26 June 1935; gift to the National Gallery of Art in 1939; deaccessioned in 1952 and returned to the Samuel H. Kress Foundation; gift 1961 to Georgia Museum of Art, University of Georgia, Athens, no R-10. [1] "Galleria Manfrin" is printed on a stamp from the back of the panel and P. Manfrin is written on the back of the panel. The painting has been identified as no. 333 in the *Catalogo dei quadri esistenti nella Galleria Manfrin in Venezia, Venice, 1856*. However, the description in J. A. Crowe and G. B. Cavalcaselle, *A history of painting in north Italy, Venice, Padua, Vicenza, Verona, Ferrara, Milan, Friuli, Brescia from the fourteenth to the sixteenth century*, ed. by Tancred Borenius (1912): 267, does not correspond precisely to K323: The Child

KRESS COLLECTION DIGITAL ARCHIVE

lying on the mother's lap. playing prettily with a bird. On a cartello to the left: "Marcus Baxaiti."

ACCESSION NUMBER

1961.1897

KRESS NUMBER

323

PICHETTO NUMBER

8627

LEGACY NGA NUMBER

287

1 ACQUISITION

Contini Bonacossi, Alessandro, June 26, 1935

3 DISTRIBUTIONS

Gift to National Gallery of Art, June 29, 1939

Deaccession by National Gallery of Art, October 15, 1952

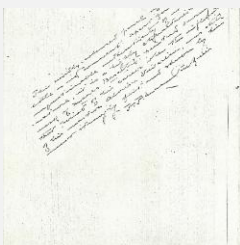
Gift to Georgia Museum of Art, The University of Georgia, December 09, 1961

EXTERNAL LINKS**Related National Gallery of Art Library Image Collections Record**

https://library.nga.gov/permalink/01NGA_INST/1p5jkvq/alma991595043804896

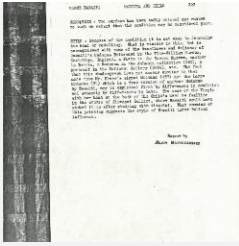
10 ARCHIVAL ITEMS

K0323 - Expert opinion by Berenson, circa 1920s-1950s

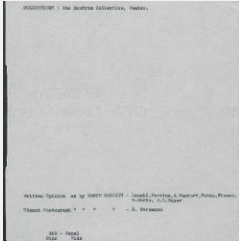


K0323 - Expert opinion by Perkins, circa 1920s-1940s

KRESS COLLECTION DIGITAL ARCHIVE



K0323 - Alan Burroughs report, circa 1930s-1940s



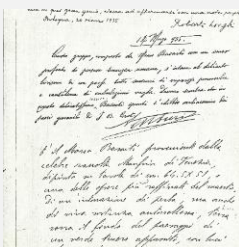
K0323 - Art object record, circa 1930s-1950s



K0323 - Photograph, circa 1930s-1960s

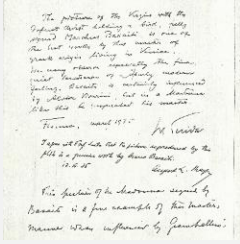


K0323 - Photograph, circa 1930s-1960s



K0323 - Expert opinion by Fiocco et al., 1935

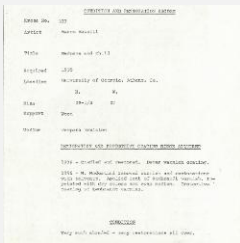
KRESS COLLECTION DIGITAL ARCHIVE



K0323 - Expert opinion by Mayer et al., 1935



K0323 - National Gallery of Art mounted photograph, circa 1940s-1950s



K0323 - Condition and restoration record, circa 1950s-1960s

RECORD LINK

<https://kress.nga.gov/Detail/objects/3423>