

Correggio, 1489/1494-1534
Portrait of a Young Girl



KRESS CATALOGUE NUMBER

K427

IDENTIFIER

3489

ARTIST

Correggio, 1489/1494-1534

NATIONALITY

Italian

DATE

c. 1515

MEDIUM

oil on panel

TYPE OF OBJECT

Painting

DIMENSIONS

42.9 x 33 cm (16-7/8 x 13 in)

LOCATION

Low Art Museum, University of Miami, Coral Gables, Florida

PROVENANCE

Conte Giuseppe Galli, Piacenza. (Count Alessandro Contini-Bonacossi [1878-1955], Rome-Florence); sold 1936 to Samuel H. Kress [1863-1955]; gift 1939 to the National Gallery of Art; deaccessioned 1952 and returned to the Samuel H. Kress Foundation; gift to Lowe Art Museum, University of Miami, Coral Gables, no. 61.016.000.

KRESS COLLECTION DIGITAL ARCHIVE

ACCESSION NUMBER

61.016.000

KRESS NUMBER

427

PICHETTO NUMBER

8919

LEGACY NGA NUMBER

346

1 ACQUISITION

Contini Bonacossi, Alessandro, June 1, 1936 [1]

3 DISTRIBUTIONS

Gift to National Gallery of Art, June 29, 1939

Deaccession by National Gallery of Art, October 15, 1952

Gift to Lowe Art Museum, University of Miami, December 09, 1961

EXTERNAL LINKS**Related Collection Record**

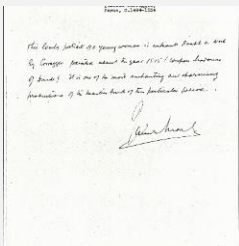
<https://emuseum1.as.miami.edu/objects/6629>

Related National Gallery of Art Library Image Collections Record

https://library.nga.gov/permalink/01NGA_INST/1p5jvkq/alma99411703804896

12 ARCHIVAL ITEMS

K0427 - Expert opinion by Berenson, circa 1920s-1950s

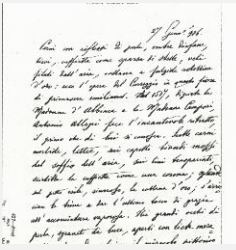


K0427 - Expert opinion by Marle, circa 1920s-1930s

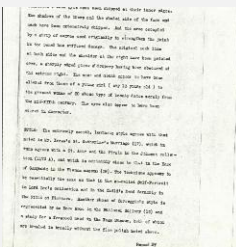
KRESS COLLECTION DIGITAL ARCHIVE



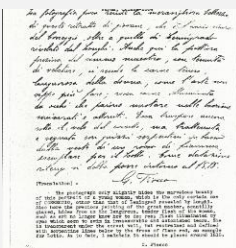
K0427 - Expert opinion by Perkins, circa 1920s-1940s



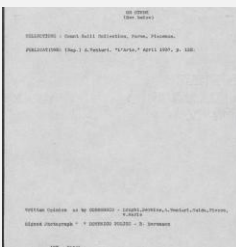
K0427 - Expert opinion by A. Venturi, circa 1920s-1930s



K0427 - Alan Burroughs report, circa 1930s-1940s



K0427 - Expert opinion by Fiocco, circa 1930s-1940s



K0427 - Art object record, circa 1930s-1950s

KRESS COLLECTION DIGITAL ARCHIVE



K0427 - Photograph, circa 1930s-1960s



K0427 - Expert opinion by Longhi, 1936



K0427 - Expert opinion by Suida, 1936



K0427 - National Gallery of Art mounted photograph, circa 1940s-1950s



K0427 - Condition and restoration record, circa 1950s-1960s

RECORD LINK

<https://kress.nga.gov/Detail/objects/3489>