

School of Barnaba da Modena
Madonna and Child



KRESS CATALOGUE NUMBER

K495

IDENTIFIER

3524

ARTIST

Barnaba da Modena, active 1361-1383
Anonymous Artist

NATIONALITY

Italian

DATE

c. 1380

MEDIUM

tempera on panel

TYPE OF OBJECT

Painting

DIMENSIONS

64.5 x 42.6 cm (25-3/8 x 16-3/4 in)

LOCATION

The Benton Museum of Art at Pomona College, Claremont, California

PROVENANCE

(Julius Böhler, Munich), by 1918. (Bachstitz Gallery, The Hague), by 1922. [1] (Spink and Son, London), by 1924. [2] (Count Alessandro Contini Bonacossi [1863-1955] Rome-Florence); sold to Samuel H. Kress [1863-1955] on 18 June 1937; gift to the National Gallery of Art in 1939; deaccessioned in 1952 and returned to the Samuel H. Kress Foundation; gift to Pomona College Museum of Art in 1961, no. P61.1.4. [1] Georg Biermann, "Eine Madonnentafel des Barnaba da Modena," in *Der Cicerone*, XIV (1922): 463. [2] Exhibited in *A Few Fine Examples of Early Masters*, Spink & Sons, London, 1924, unnumbered catalogue p. 22 as

KRESS COLLECTION DIGITAL ARCHIVE

Barnaba da Modena.

ACCESSION NUMBER

P61.1.6

KRESS NUMBER

495

PICHETTO NUMBER

9361

LEGACY NGA NUMBER

388

1 ACQUISITION

Contini Bonacossi, Alessandro, June 18, 1937

3 DISTRIBUTIONS

Gift to National Gallery of Art, June 29, 1939

Deaccession by National Gallery of Art, October 15, 1952

Gift to Pomona College, December 09, 1961

EXTERNAL LINKS**Related National Gallery of Art Library Image Collections Record**

https://library.nga.gov/permalink/01NGA_INST/1p5jkvq/alma99412903804896

12 ARCHIVAL ITEMS

K0495 - Expert opinion by Berenson, circa 1920s-1950s

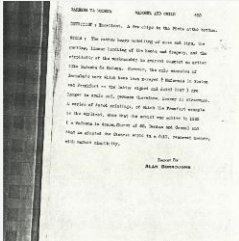


K0495 - Expert opinion by Perkins, circa 1920s-1940s

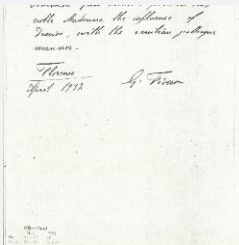
KRESS COLLECTION DIGITAL ARCHIVE



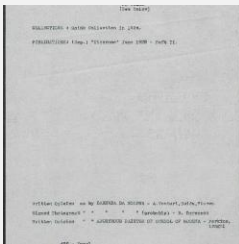
K0495 - Expert opinion by A. Venturi, circa 1920s-1930s



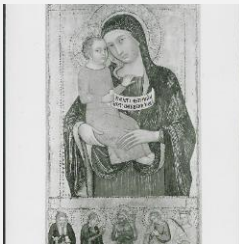
K0495 - Alan Burroughs report, circa 1930s-1940s



K0495 - Expert opinion by Fiocco, 1932

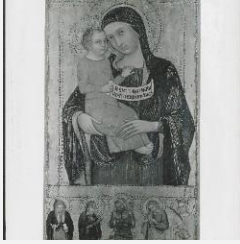


K0495 - Art object record, circa 1930s-1950s

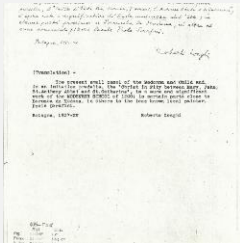


K0495 - Photograph, circa 1930s-1960s

KRESS COLLECTION DIGITAL ARCHIVE



K0495 - Photograph, circa 1930s-1960s



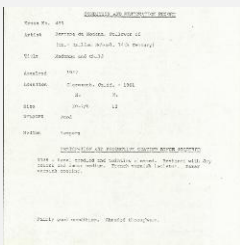
K0495 - Expert opinion by Longhi, 1937



K0495 - Expert opinion by Suida, 1937



K0495 - National Gallery of Art mounted photograph, circa 1940s-1950s



K0495 - Condition and restoration record, circa 1950s-1960s

RECORD LINK

<https://kress.nga.gov/Detail/objects/3524>