

**Francesco d'Antonio Banchi, active 1393-1433**  
*Madonna and Child with Swallow*



**KRESS CATALOGUE NUMBER**

K543

**IDENTIFIER**

3561

**ARTIST**

Banchi, Francesco d'Antonio, active 1393-1433

**NATIONALITY**

Italian

**DATE**

about 1420-25

**MEDIUM**

tempera on panel

**TYPE OF OBJECT**

Painting

**DIMENSIONS**

114.5 x 58 cm (45 x 22-7/8 in)

**LOCATION**

Denver Art Museum, Denver, Colorado

**PROVENANCE**

Church of San Domenico, Pisa. Giuseppe Toscanelli [1828-1891], Pisa. [1] Private Collection, Munich. (Julius Böhler, Munich); sold 1904 to Emil Weinberger, Vienna; (his sale, J.C. Wawra, Vienna, 22-24 October 1929). (Count Alessandro Contini Bonacossi [1878-1955] Rome-Florence); sold to Samuel H. Kress [1863-1955] on 18 June 1937; gift 1939 to the National Gallery of Art in 1939; deaccessioned in 1952 and returned to the Samuel H. Kress Foundation; gift 1961 to Denver Art Museum, no. 1961.157. [1] Not included in the 1883 sale of the Toscanelli collection in Florence.

# KRESS COLLECTION DIGITAL ARCHIVE

**ACCESSION NUMBER**

1961.157

**KRESS NUMBER**

543

**LEGACY NGA NUMBER**

427

---

**1 ACQUISITION**

Contini Bonacossi, Alessandro, September 16, 1938 [2]

---

**3 DISTRIBUTIONS**

Gift to National Gallery of Art, June 29, 1939

Deaccession by National Gallery of Art, February 21, 1952

Gift to Denver Art Museum, December 09, 1961

---

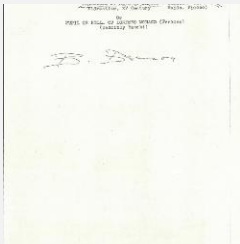
**EXTERNAL LINKS****Related Collection Record**

<https://denverartmuseum.org/object/1961.157>

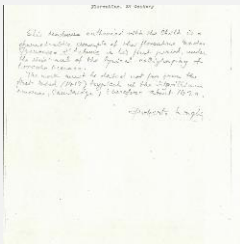
**Related National Gallery of Art Library Image Collections Record**

[https://library.nga.gov/permalink/01NGA\\_INST/1p5jvkq/alma99413323804896](https://library.nga.gov/permalink/01NGA_INST/1p5jvkq/alma99413323804896)

---

**11 ARCHIVAL ITEMS**

K0543 - Expert opinion by Berenson, circa 1920s-1950s



K0543 - Expert opinion by Longhi, circa 1920s-1950s

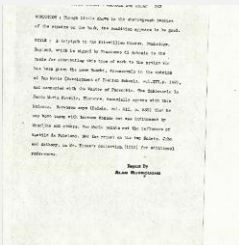
# KRESS COLLECTION DIGITAL ARCHIVE



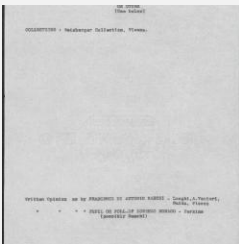
K0543 - Expert opinion by Perkins, circa 1920s-1940s



K0543 - Expert opinion by A. Venturi, circa 1920s-1930s



K0543 - Alan Burroughs report, circa 1930s-1940s



K0543 - Art object record, circa 1930s-1950s



K0543 - Photograph, circa 1930s-1960s

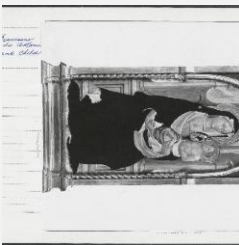
# KRESS COLLECTION DIGITAL ARCHIVE



K0543 - Expert opinion by Fiocco, 1938



K0543 - Expert opinion by Suida, 1938



K0543 - National Gallery of Art mounted photograph, circa 1940s-1950s



K0543 - Condition and restoration record, circa 1950s-1960s

## RECORD LINK

<https://kress.nga.gov/Detail/objects/3561>