

Attributed to Giuliano Bugiardini
Portrait of a Patrician



KRESS CATALOGUE NUMBER

KX-3

IDENTIFIER

3669

ARTIST

Bugiardini, Giuliano, 1475-1554

NATIONALITY

Italian

DATE

1510/30

MEDIUM

oil on panel

TYPE OF OBJECT

Painting

DIMENSIONS

58.4 x 48.3 cm (23 x 19 in)

LOCATION

Portland Art Museum, Portland, Oregon

HISTORICAL ATTRIBUTION

Ghirlandaio, Ridolfo, 1483-1561

PROVENANCE

Said to have been sold in 1787 by Gaetano Taddei to Senatore Adami, Florence. M. P. Casali, 1857. Monsignore Manni, Rome. [1] Cardinale Bertocci, Rome, before 1897. [2] (Count Alessandro Contini Bonacossi [1878-1955], Rome); acquired 1929 by Samuel H. Kress [1863-1955]; gift 1939 to the National Gallery of Art, as Taddeo Taddei by Ridolfo Ghirlandaio; deaccessioned 1952 and returned to the Samuel H. Kress Foundation; gift 1961 to the Portland Art Museum no. 61.29. [1]J. D.Passavant, Raphael d'Urbino, 1860, p. 371 reports that this painting had been considered to be a portrait of Taddeo Taddei by Raphael and cites the report that

KRESS COLLECTION DIGITAL ARCHIVE

the portrait was sold in 1787 by Gaetano Taddei to Senatore Adami, Florence, as certified by Elio Adami 26 December 1855, Florence. Passavant also lists Casali and Manni as owners. [2] Catalogo della Mostra Internazionale Raffaellesca in Urbino, 1897, no. 469.

ACCESSION NUMBER

61.29

KRESS NUMBER

X-3

LEGACY NGA NUMBER

113

1 ACQUISITION

Contini Bonacossi, Alessandro, May 13, 1929

3 DISTRIBUTIONS

Gift to National Gallery of Art, June 29, 1939

Deaccession by National Gallery of Art, February 21, 1952

Gift to Portland Art Museum, December 09, 1961

EXTERNAL LINKS

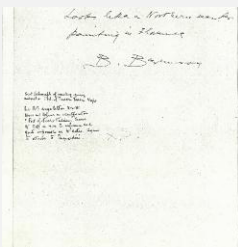
Related Collection Record

<http://www.portlandartmuseum.us/mwebcgi/mweb.exe?request=record;id=11925;type=101>

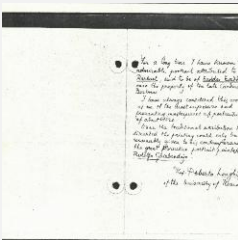
Related National Gallery of Art Library Image Collections Record

https://library.nga.gov/permalink/01NGA_INST/1p5jkvq/alma991102663804896

14 ARCHIVAL ITEMS



K00X3 - Expert opinion by Berenson, circa 1920s-1950s



K00X3 - Expert opinion by Longhi, circa 1920s-1950s

KRESS COLLECTION DIGITAL ARCHIVE

K00X3 - Expert opinion by Marle, circa 1920s-1930s



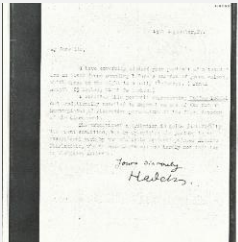
K00X3 - Expert opinion by Perkins et al., circa 1920s-1940s



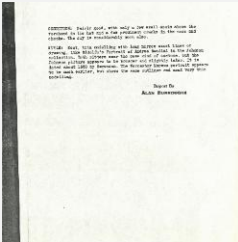
K00X3 - Expert opinion by Gronau, 1927



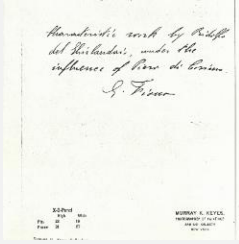
K00X3 - Expert opinion by Hadeln, 1927



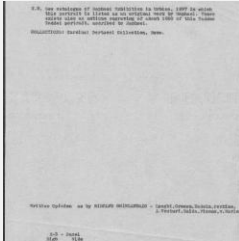
K00X3 - Alan Burroughs report, circa 1930s-1940s



KRESS COLLECTION DIGITAL ARCHIVE



K00X3 - Expert opinion by Fiocco, circa 1930s-1940s



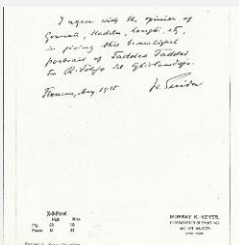
K00X3 - Art object record, circa 1930s-1950s



K00X3 - Photograph, circa 1930s-1960s



K00X3 - Photograph, circa 1930s-1960s

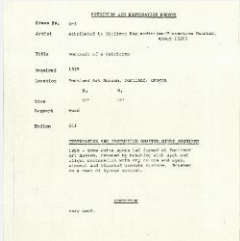


K00X3 - Expert opinion by Suida, 1935

KRESS COLLECTION DIGITAL ARCHIVE



K00X3 - National Gallery of Art mounted photograph, circa 1940s-1950s



K00X3 - Condition and restoration record, circa 1950s-1960s

RECORD LINK

<https://kress.nga.gov/Detail/objects/3669>