

Titian, 1488/1490-1576
Cupid with the Wheel of Time

**KRESS CATALOGUE NUMBER**

K390

IDENTIFIER

633

ARTIST

Titian, 1488/1490-1576

NATIONALITY

Italian

DATE

c. 1515/1520

MEDIUM

oil on canvas

TYPE OF OBJECT

Painting

DIMENSIONS

65.9 x 55.3 cm (25 15/16 x 21 3/4 in)

LOCATION

National Gallery of Art, Washington, District of Columbia

PROVENANCE

(Angelo Bonelli, Rome), by 1803; (Bonelli sale by private contract [not an auction], No. 4 Duke Street [The Roman Gallery], London, 4 January 1803 and continuing until 15 December 1803, no. 65, as *A Genius trying to stop a Wheel* by Parmegianino[sic], not sold); (Bonelli sale, Christie's, London, 24-25 February 1804, first day, no. 24, as *A Sketch, very spirited* by Parmigiano[sic], bought in); (Bonelli sale, Farebrother, London [?], 2 May 1804, no. 42, as *An allegory, a beautiful sketch -- from the Altieri Palace at Rome* by Polidoro). [1] Viani, Rome. (Count Alessandro Contini-Bonacossi, Florence and Rome); sold October 1935 to the Samuel H. Kress Foundation, New York; [2] gift 1939 to NGA. [1] The original catalogue for the 1803 sale is in the Woollcombe Library at Hemerdon near Plymouth in Devon, England. This information and the details of the Bonelli sales are in a 12 September 1989 letter from Burton Fredericksen of the Getty Provenance Index to Suzannah Fabing, in NGA curatorial files. See also Fredericksen's

KRESS COLLECTION DIGITAL ARCHIVE

descriptions of the three sales in their records, Sale Catalogs Br-151-A, Br-241, and Br-257, the Getty Provenance Index databases, J. Paul Getty Trust, Los Angeles. [2] The bill of sale for several paintings including this one, which is titled *Cupid with Wheel of Life*, is dated 10 October 1935, with payment received 23 October (copy in NGA curatorial files).

ACCESSION NUMBER

1939.1.213

KRESS NUMBER

390

PICHETTO NUMBER

8788

LEGACY NGA NUMBER

324

1 ACQUISITION

Contini Bonacossi, Alessandro, October 10, 1935 [2]

1 DISTRIBUTION

Gift to National Gallery of Art, June 29, 1939

EXTERNAL LINKS

Related Collection Record

<https://www.nga.gov/collection/art-object-page.354.html>

Related National Gallery of Art Library Image Collections Record

https://library.nga.gov/permalink/01NGA_INST/1p5jkvq/alma99156013804896

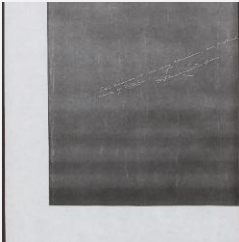
Related National Gallery of Art Systematic Catalog

<https://www.nga.gov/research/online-editions/italian-paintings-of-the-sixteenth-century.html>

14 ARCHIVAL ITEMS

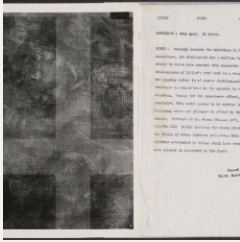


K0390 - Expert opinion by Berenson, circa 1920s-1950s



K0390 - Expert opinion by Perkins, circa 1920s-1940s

KRESS COLLECTION DIGITAL ARCHIVE



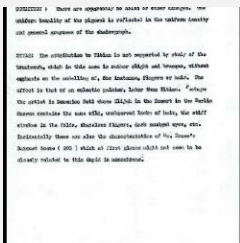
K0390 - Alan Burroughs report, circa 1930s-1940s



K0390 - Alan Burroughs report, circa 1930s-1940s



K0390 - Art object record, circa 1930s-1950s

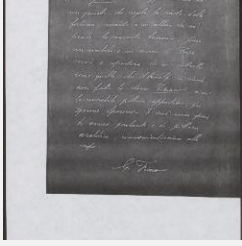


K0390 - Alan Burroughs report, circa 1930s-1940s

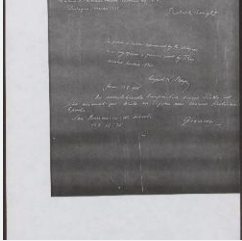


K0390 - Art object record, circa 1930s-1950s

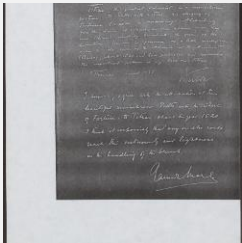
KRESS COLLECTION DIGITAL ARCHIVE



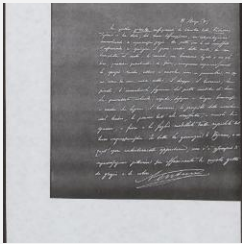
K0390 - Expert opinion by Fiocco, 1935



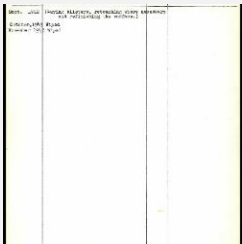
K0390 - Expert opinion by Gronau et al., 1935



K0390 - Expert opinion by Suida et al., 1935

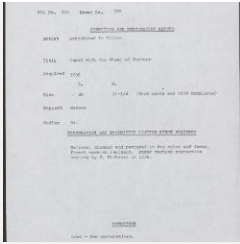


K0390 - Expert opinion by A. Venturi, 1935



K0390 - Work summary log, 1942-1943

KRESS COLLECTION DIGITAL ARCHIVE



K0390 - Condition and restoration record, circa 1950s-1960s



K0390 - Examination summary, 1989

RECORD LINK

<https://kress.nga.gov/Detail/objects/633>